



Colliers

FOR SALE

103 South Parker Road | Ann Arbor, MI 78 Acres Development Land

- Two Parcels in Scio Township: 78 Acres | \$1,400,000
- Both Parcels are Located within Scio Township's Sewer and Water Service Districts
- While Currently Zoned 'General Agriculture', Scio Township Future Land Use Indicates this Land as Mixed-Use Office / Industrial with the Following Desirable Land Uses: Office / Research, Light Industrial, High Density Residential (only as part of a mixed-use development), and General Commercial (only as part of a mixed-use development)
- Great Location Just South of Jackson Ave, Near Industrial, Local Businesses, and Established Residential Neighborhoods
- Scio Township Taxes, Dexter Schools



Jim Chaconas

734 769 5005

jim.chaconas@colliers.com



Paul Godek

734 769 5009

paul.godek@colliers.com

Colliers | Ann Arbor, 1955 Pauline Blvd, Suite 400 Ann Arbor, MI 48103
www.ColliersAnnArbor.com



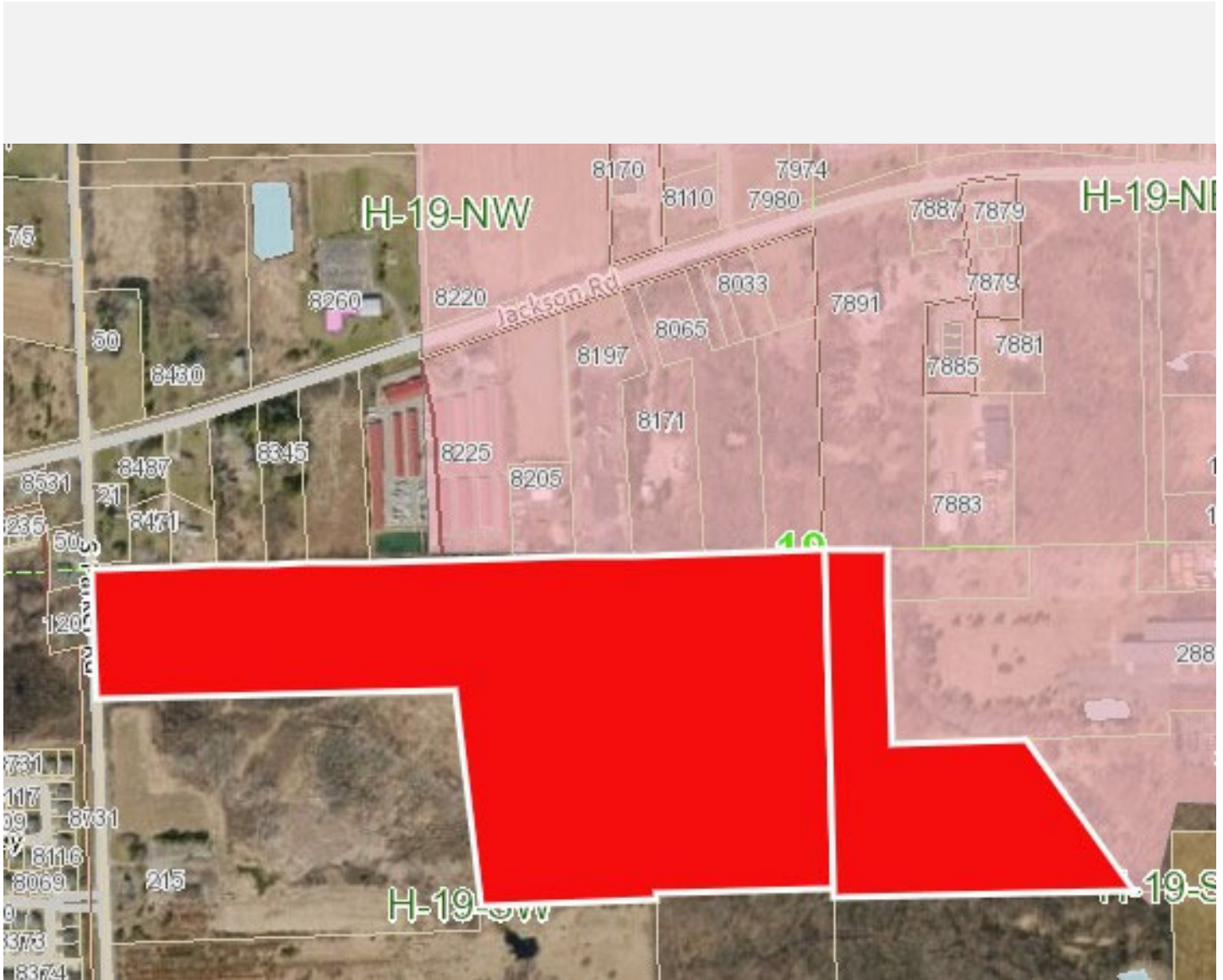


103 South Parker Road | Ann Arbor, MI
78 Acres Development Land

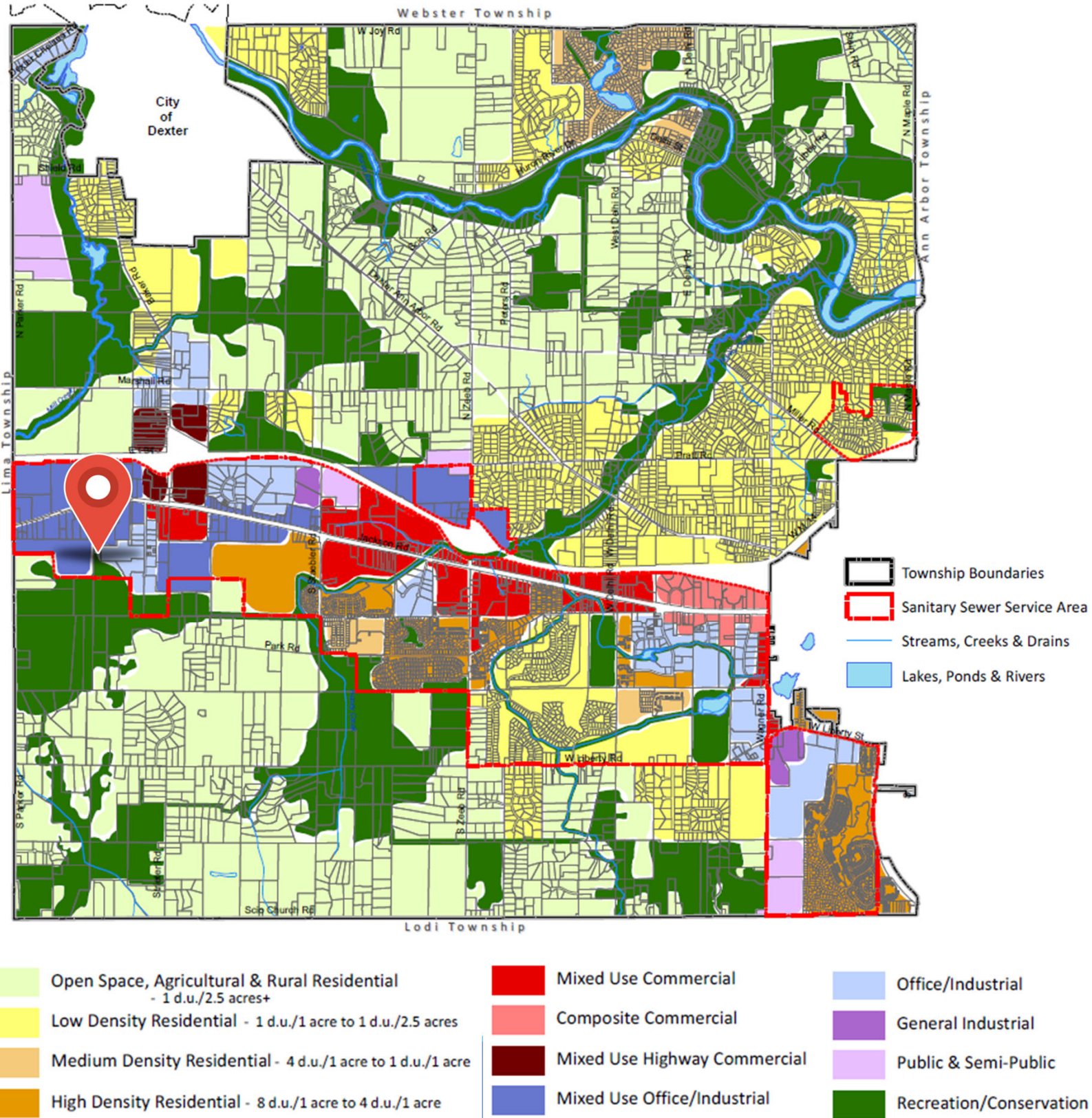
PROPERTY PHOTO



MAP OF EXISTING SANITARY SEWER SERVICE AREA



SCIO TWP FUTURE LAND USE GUIDE





DEMOGRAPHICS

Population Trends & Key Indicators

103 S Parker Rd, Ann Arbor, Michigan, 48103 | 5 mile radius

22,545	8,534	2.64	43.0	\$106,429	\$354,386	203	148	30
Population	Households	Avg size household	Median age	Median household income	Median home value	Wealth index	Housing affordability	Diversity index

Mortgage indicators



\$18,077

Avg spent on mortgage & basics



14.0%

Percent of income for mortgage

Population by generation



4.8%

Greatest gen:
born 1945/earlier



25.0%

Baby boomer:
born 1946 to 1964



22.5%

Generation x:
born 1965 to 1980



19.6%

Millennial:
born 1981 to 1998



22.7%

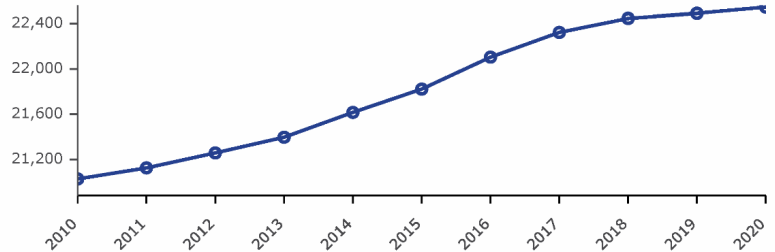
Generation z:
born 1999 to 2016



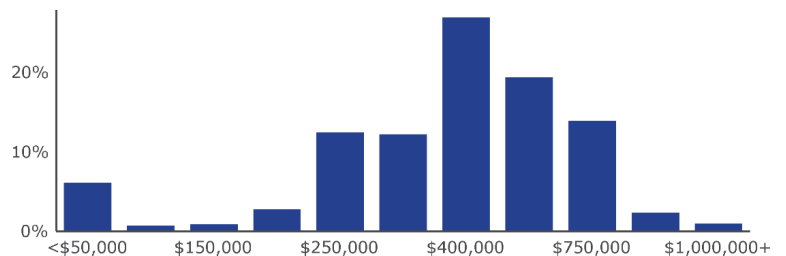
5.3%

Alpha: born
2017 to present

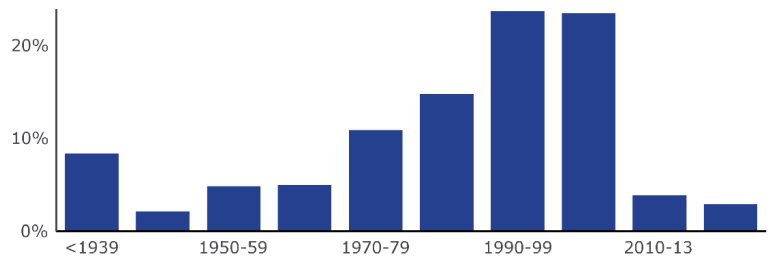
Historical trends: population



Home value



Housing: year built



U.S. Census Bureau, Esri forecasts for 2021 and 2026, Esri Vintage 2021 Time Series



FUTURE LAND USE MAP AND SEWER SERVICE AREA BOUNDARY

