



# FOR LEASE

OFFICE SPACE AVAILABLE • PROPERTY HIGHLIGHTS

2725 Packard Road | Ann Arbor, Michigan

- 2,921 SF | \$20.82-23.32 PSF
- Square Footage Includes a 12% Load Factor
- Terrific Arts and Therapy Office Building Conveniently Located at the Conjunction of Packard Rd & Eisenhower Pkwy
- 2 Suites Across Two Floors. Each Floor Offers 2 Separate Suites that May Be Combined
- Welcoming, Open Entrance with Peaked Ceilings, Elevator, Fire Suppression System
- Suites Boast Large Windows for Plenty of Daylight, Private Offices, Conference / Meeting and Gathering Rooms, Kitchens, Common Restrooms, Full Basement
- Quiet Location Just West of Neighboring Buhr Park with Plenty of Parking



**George Kokales**  
734 769 5014  
[george.kokales@colliers.com](mailto:george.kokales@colliers.com)

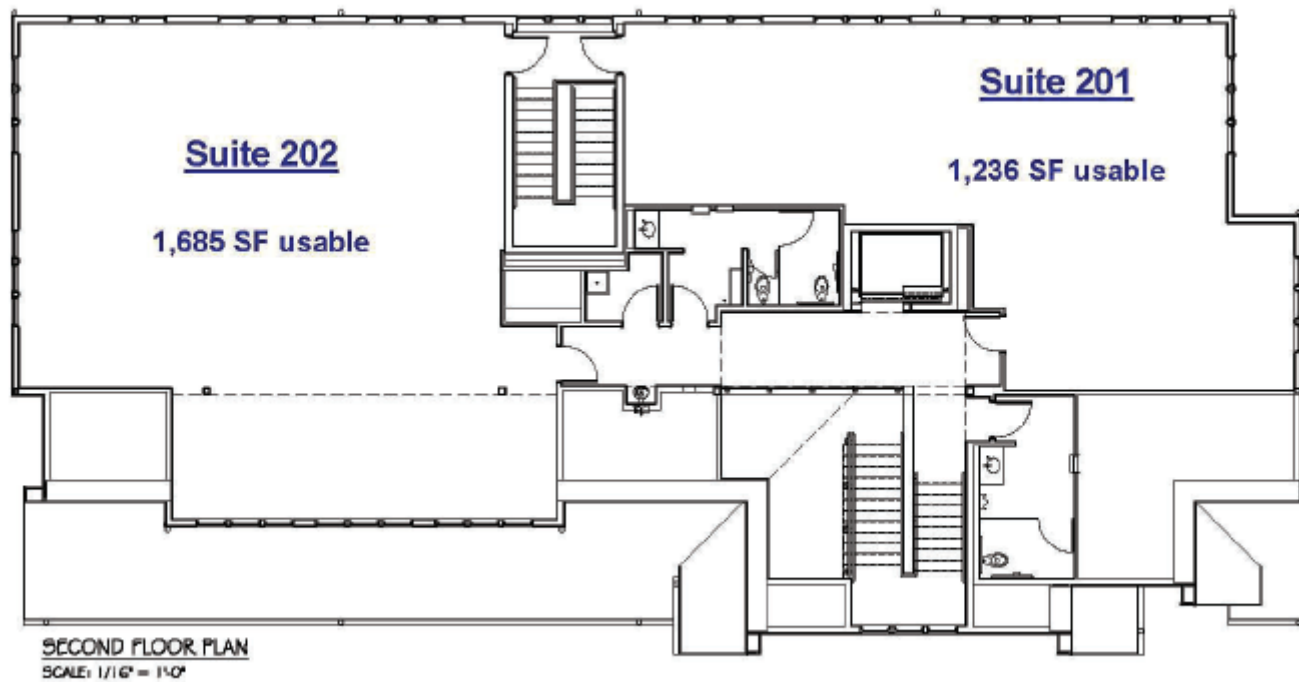


**Jim Chaconas**  
734 769 5005  
[jim.chaconas@colliers.com](mailto:jim.chaconas@colliers.com)

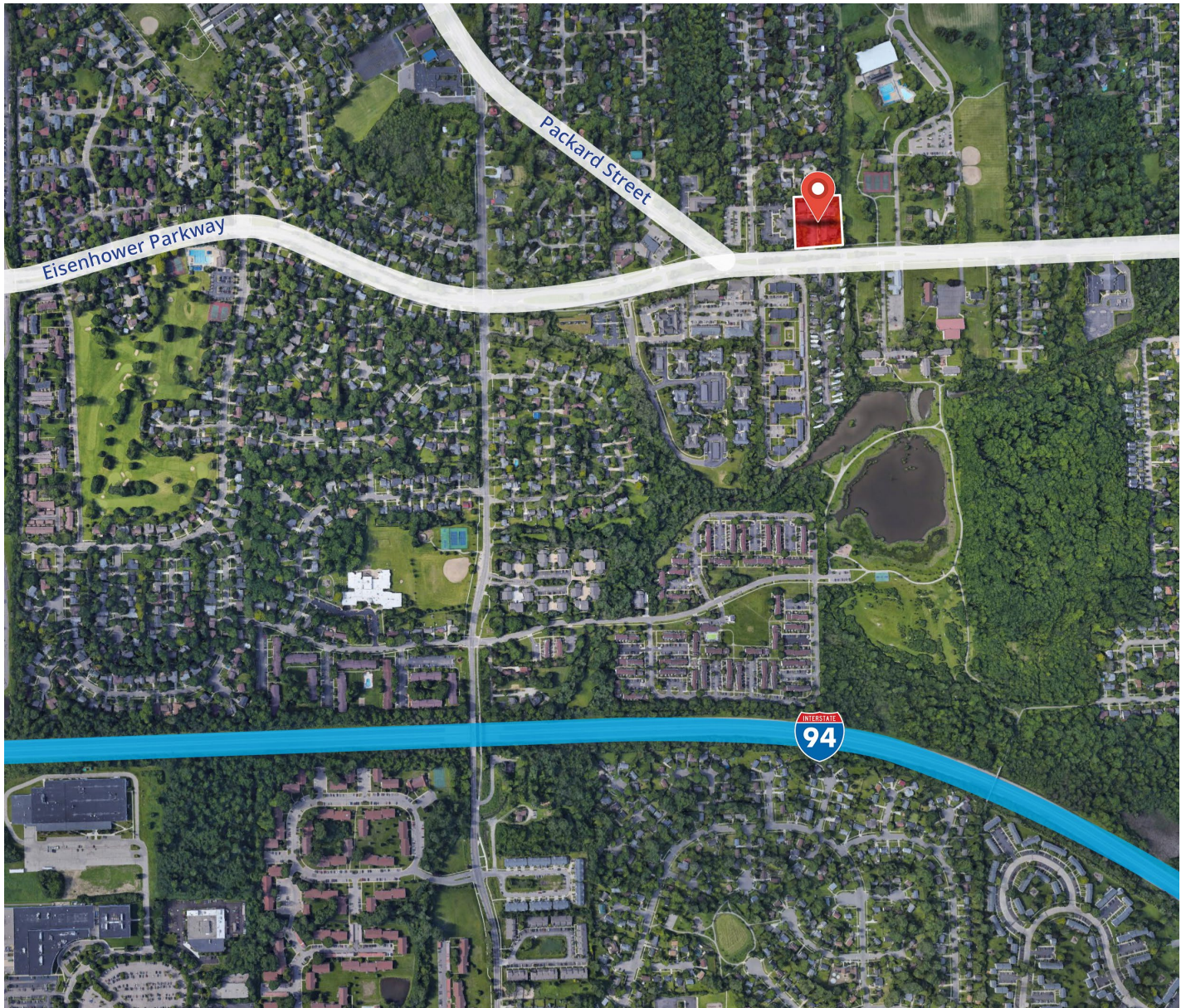
## PROPERTY PHOTOS – Second Floor



## FLOOR PLAN



AERIAL



**George Kokales**  
734 769 5014  
george.kokales@colliers.com



**Jim Chaconas**  
734 769 5005  
jim.chaconas@colliers.com