



For Lease

Retail Space Available • Property Highlights

3365 Washtenaw Avenue | Ann Arbor, Michigan

Space Available at \$30 PSF NNN:

- Suite F North: 1,084 SF
- Suite F South: 1,435 SF
- Suite F Combined: 2,519 SF
- Suite G: 1,084 SF
- Locally Owned and Managed
- Current Tenants Include The Vitamin Shop, Jimmy John's, KSI Kitchen & Bath, Detroit Wing Company, and Citizen's Bank
- High Traffic Area Located Between Whole Foods and Arborland Shopping Center
- Great Visibility with Easy Ingress / Egress from Washtenaw Ave or Chalmers Dr
- Minutes to US-23, Downtown Ann Arbor, and Surrounding Communities

CHACONAS GROUP

ANN ARBOR AREA

annarbor@colliers.com | 734 994 3100

Colliers Ann Arbor, 1955 Pauline Blvd, Suite 400 | Ann Arbor, MI 48103
www.ColliersAnnArbor.com



Property Photos





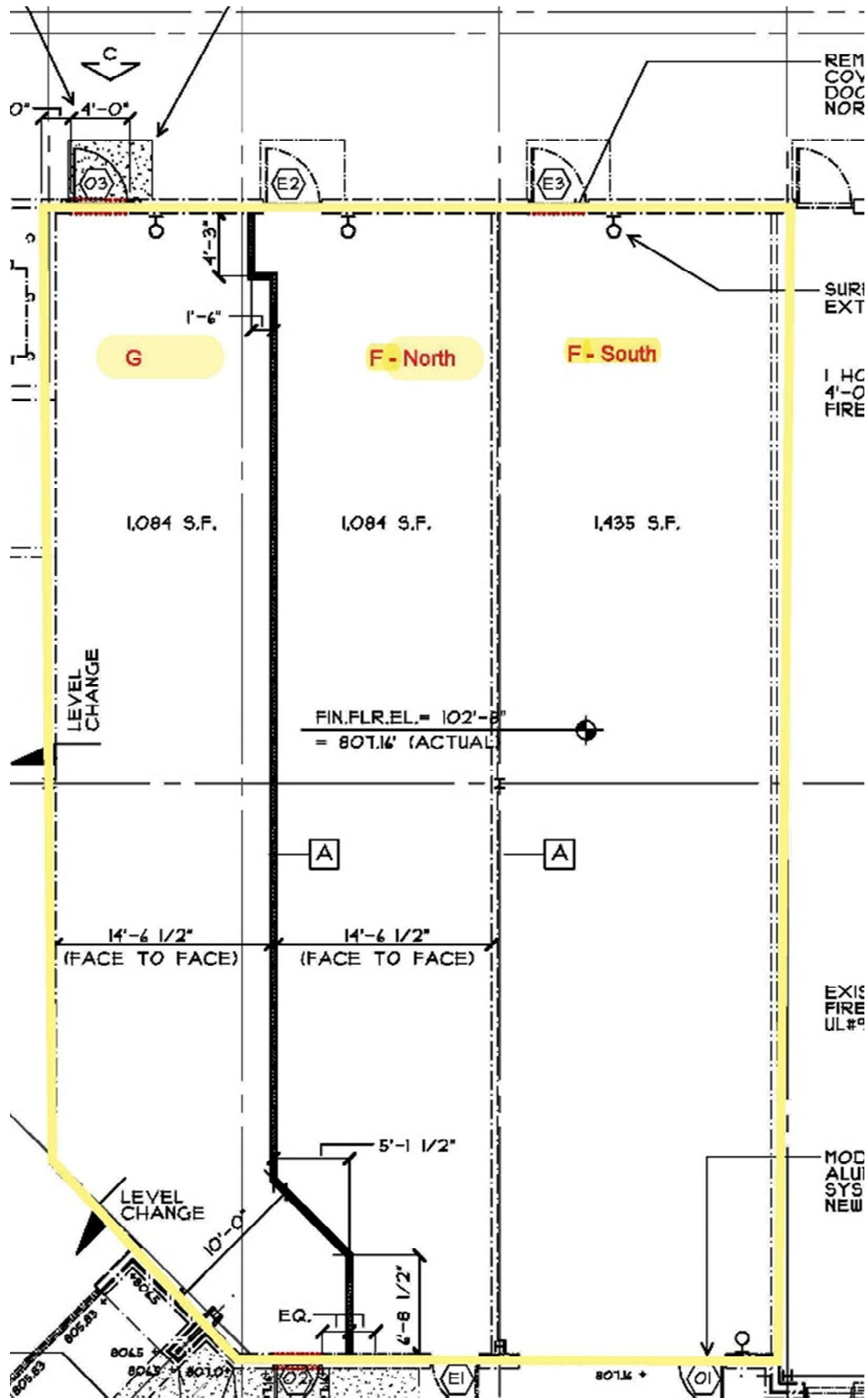
Suite F – [Watch Video](#)



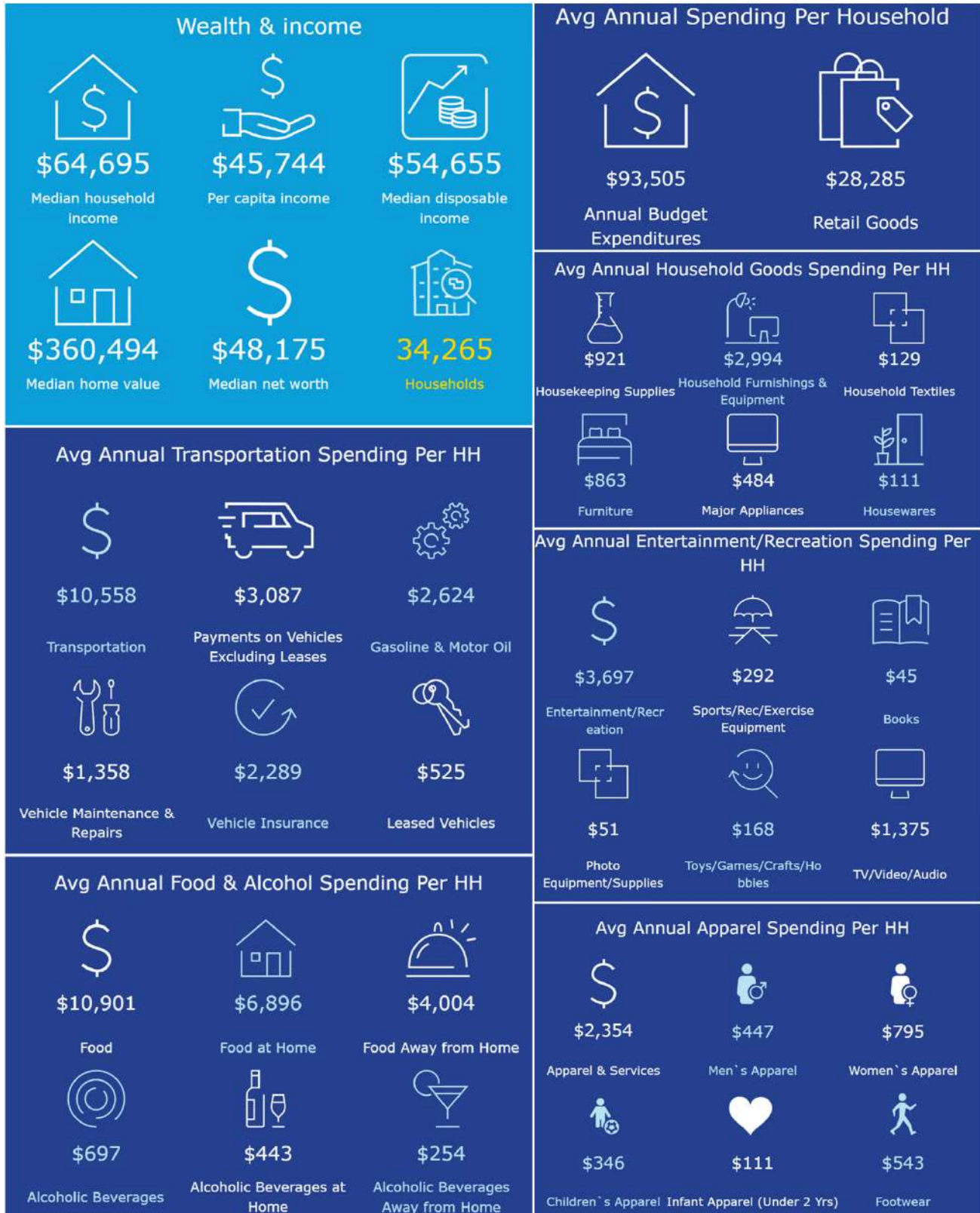
Suite G – [Watch Video](#)



Site Plan



Demographics – 3 Mile Radius



Aerial



We have no reason to doubt the accuracy of information contained herein, but we cannot guarantee it. All information should be verified prior to purchase and/or lease.

CHACONAS GROUP

ANN ARBOR AREA

annarbor@colliers.com | 734 994 3100

Colliers Ann Arbor, 1955 Pauline Blvd, Suite 400 | Ann Arbor, MI 48103
www.ColliersAnnArbor.com

