



# For Lease

Office Availability • Property Highlights

## 825 Victors Way, Suite 200 | Ann Arbor, Michigan

- 11,143 SF | \$21 PSF
- Heart of the State Street Corridor
- Updated 2<sup>nd</sup> floor Suite is Move-in Ready
- Spacious Reception Area & Lobby
- In Suite Restrooms
- Private Offices, Conference Rooms, and Open Workspaces
- Easy Access to S State Street, Eisenhower, and I-94
- Plenty of Parking

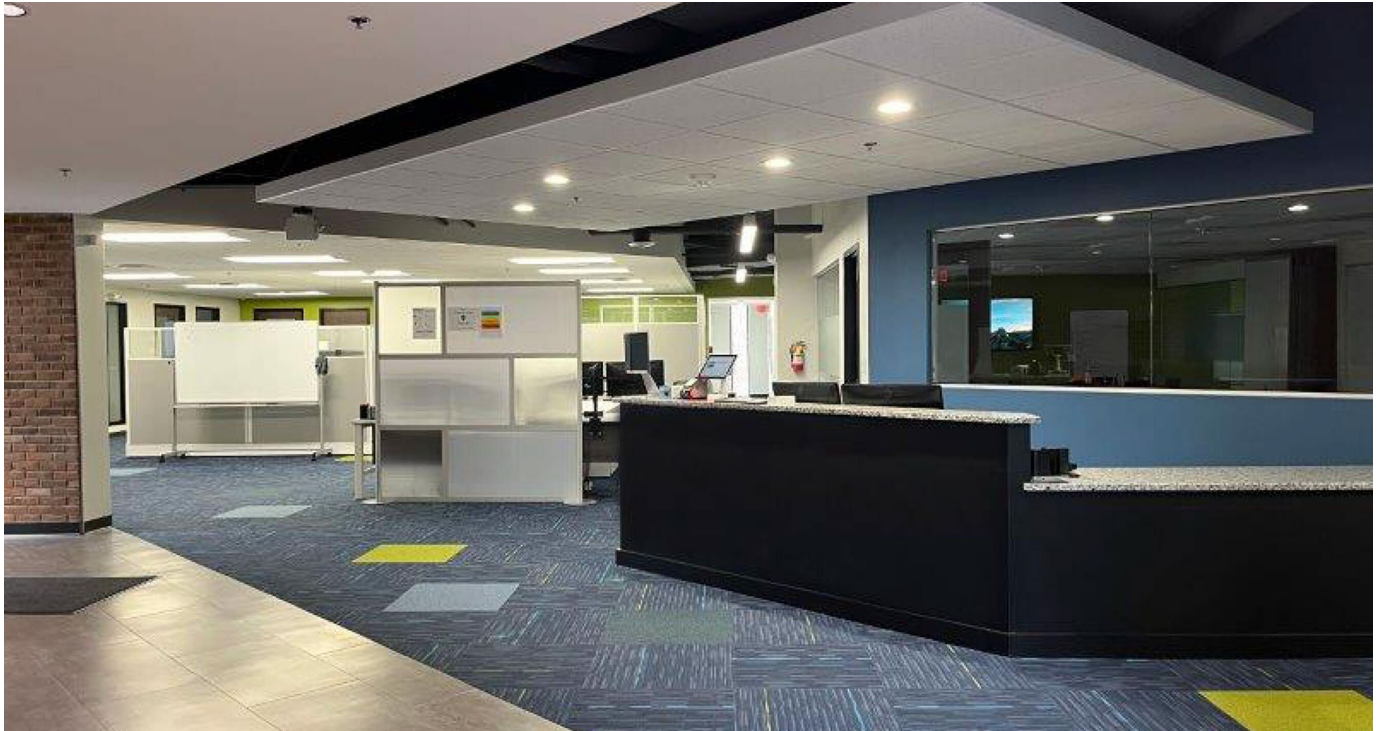


**Jim Chaconas**  
734.769.5005  
Jim.chaconas@colliers.com

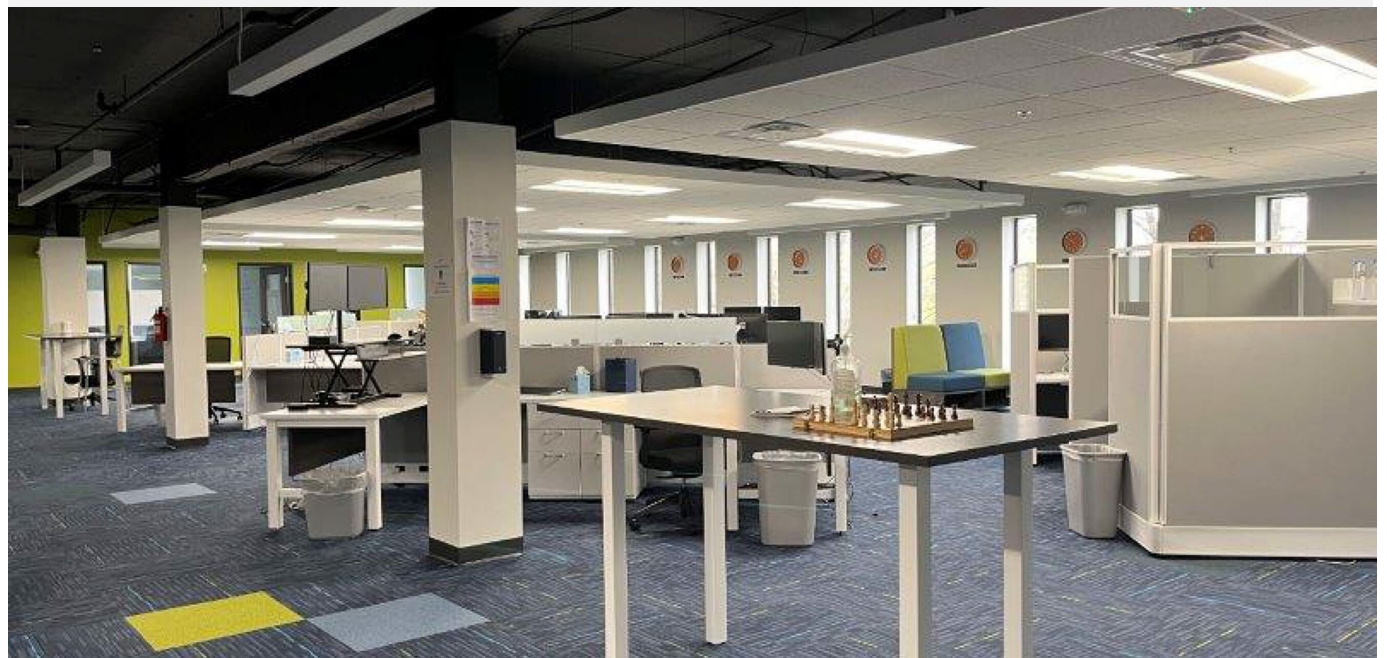
Colliers International Ann Arbor | 1955 Pauline Blvd, Suite 400  
Ann Arbor, MI 48103  
www.colliersannarbor.com



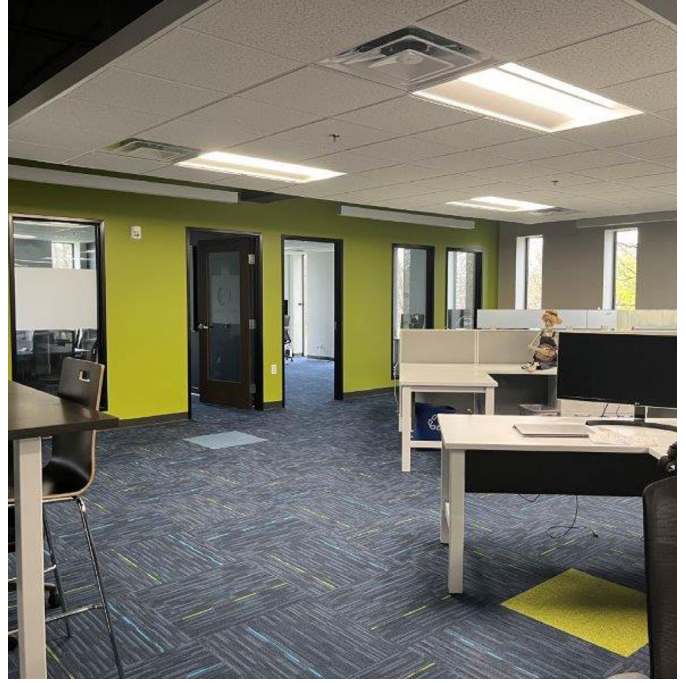
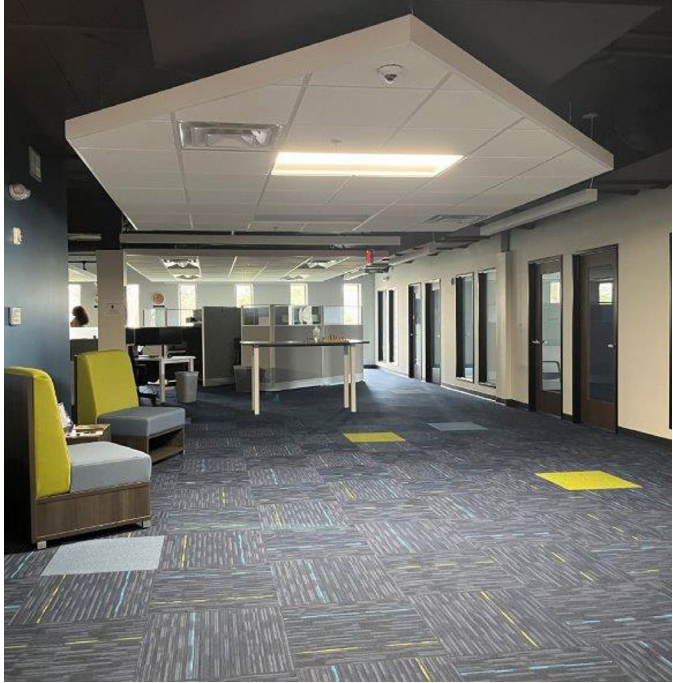
## Interior Photos



## Interior Photos



## Interior Photos



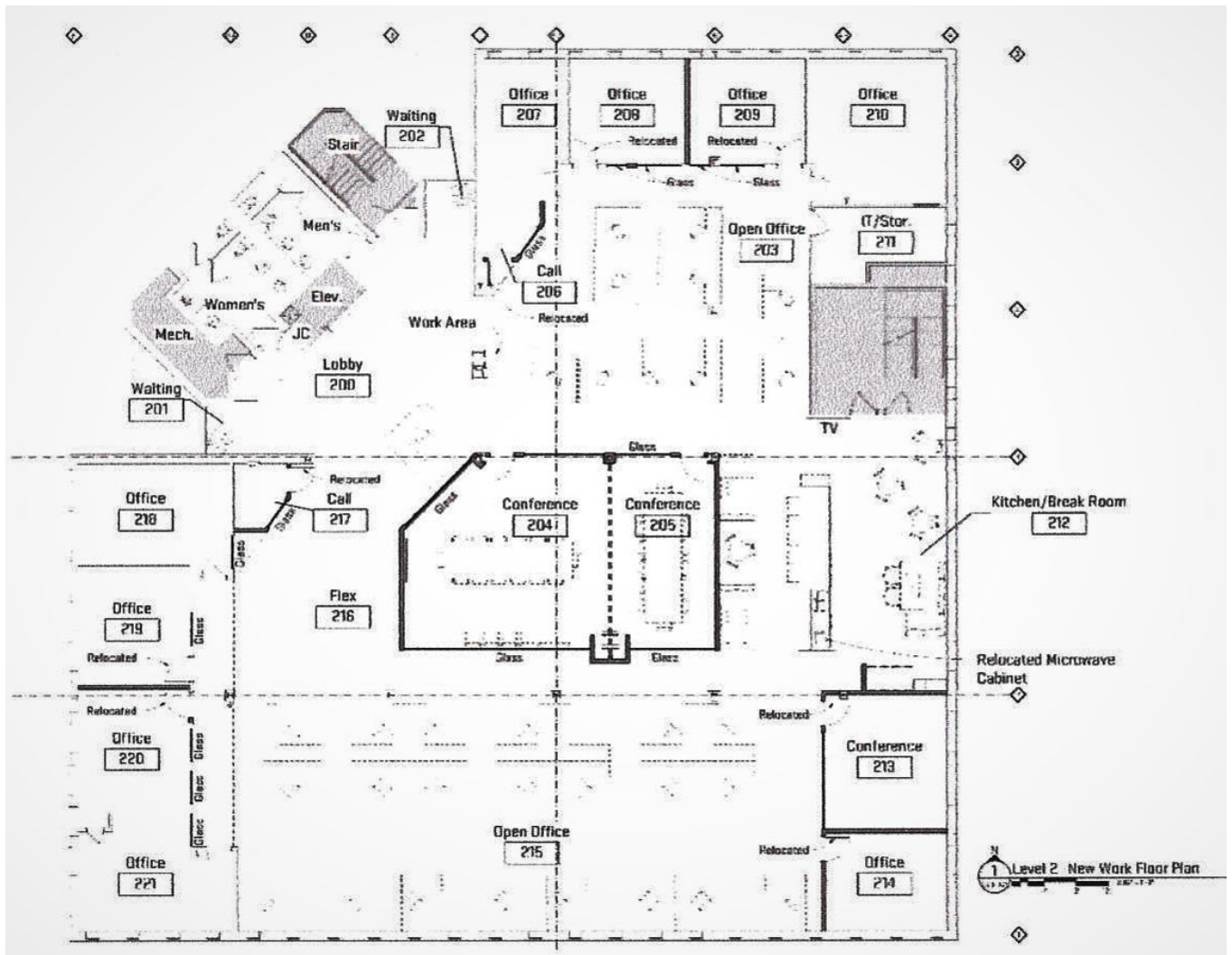
## Interior Photos



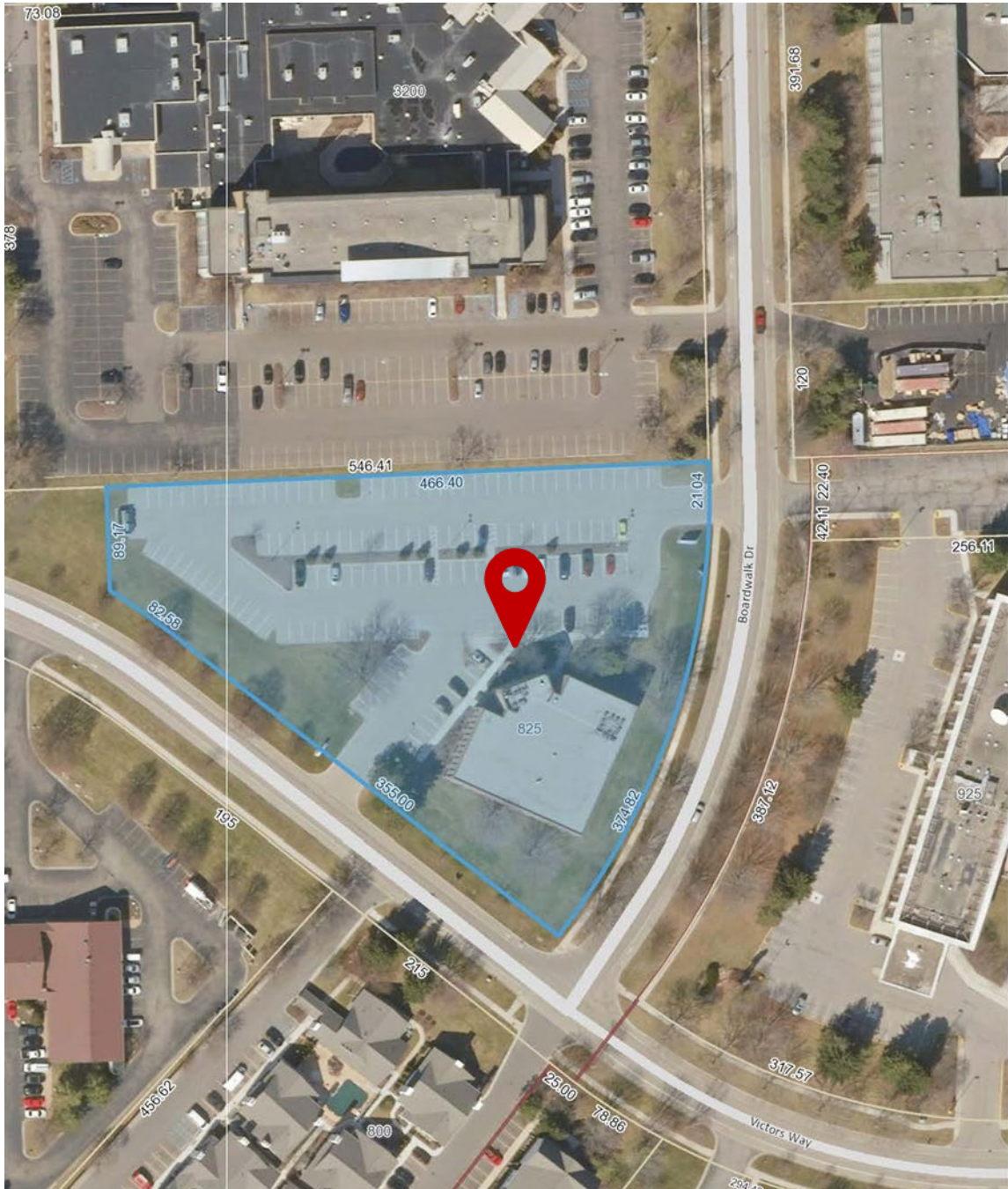
Interior /Exterior Photos



## Floor Plan



## Aerial



**Jim Chaconas**  
734.769.5005  
jim.chaconas@colliers.com