



For Sale

Land Availability • Property Highlights

7160 Moon Rd. | Saline, MI

- Priced at \$1,000,000
- Prime Location w/ 26,300 Cars Passing by Daily
- 1.58-acre Parcel with Frontage on Moon Rd, and Visibility from Michigan Ave
- Potential for a 10,300 SF Building with Onsite Parking
- Convenient Access from both Michigan Ave. and Moon Road
- Strategic Location next to Trinity Health IHA's Newly Opened Urgent Care Center, and nearby KinderCare Learning Center, Car Dealerships, Established Neighborhoods, Retail Centers, and Businesses
- All Necessary Utilities Readily Available
- Just Minutes from Downtown Saline, Nearby Ann Arbor, US-23, and Surrounding Communities

CHACONAS GROUP

ANN ARBOR AREA

annarbor@colliers.com | 734 994 3100

Colliers Ann Arbor, 1955 Pauline Blvd., Suite 400, Ann Arbor, MI 48103

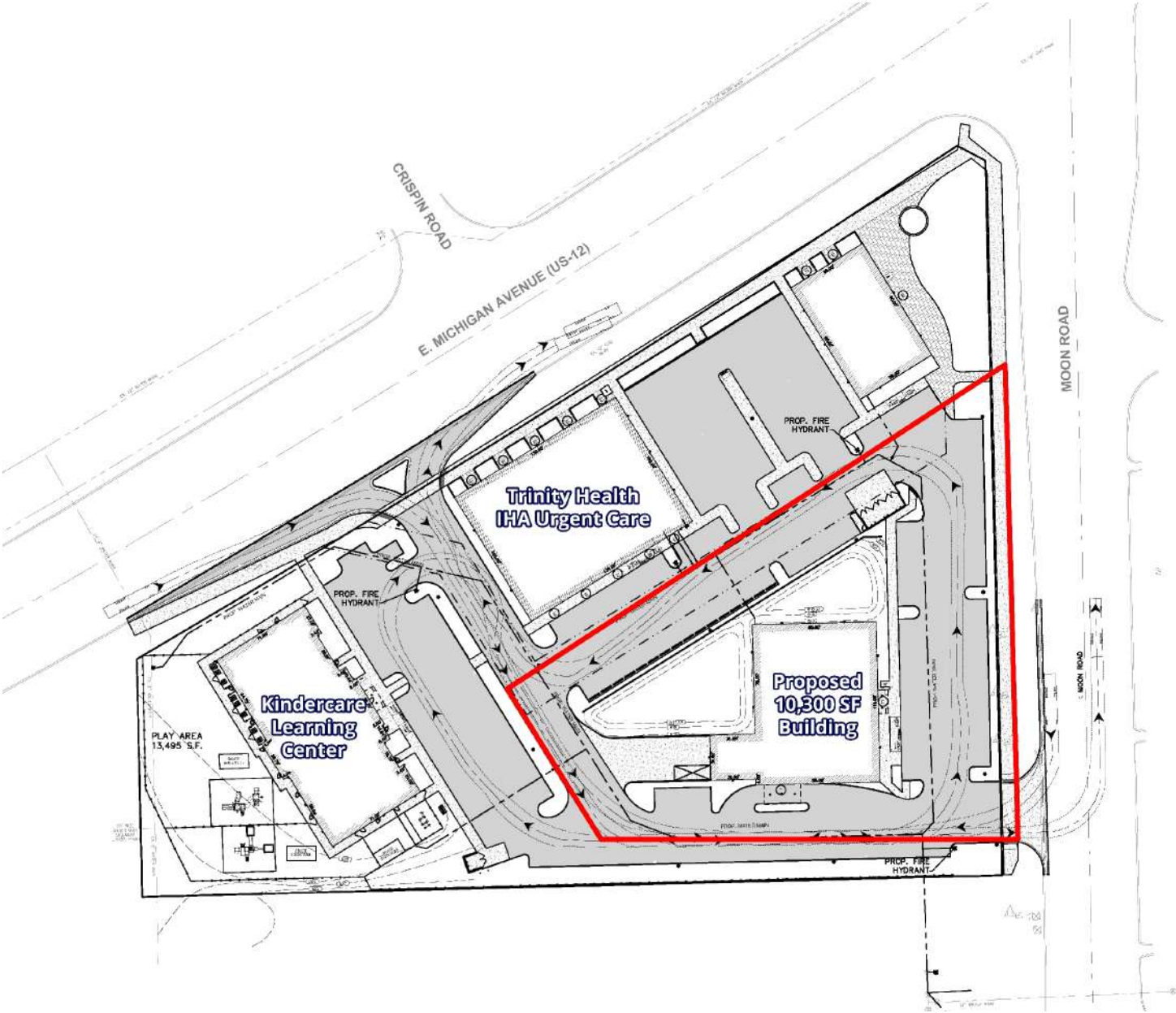
www.colliersannarbor.com



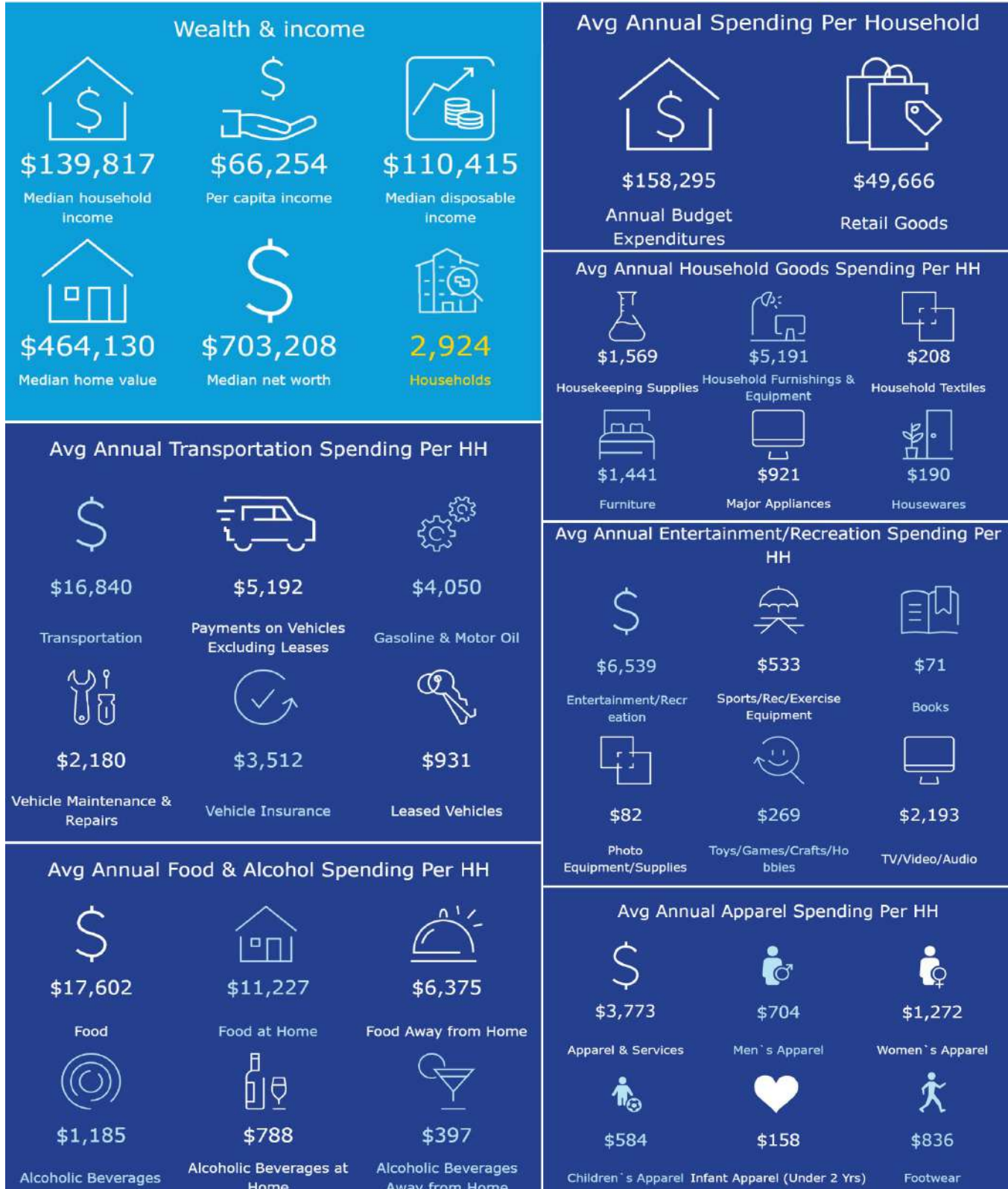
Property Photos



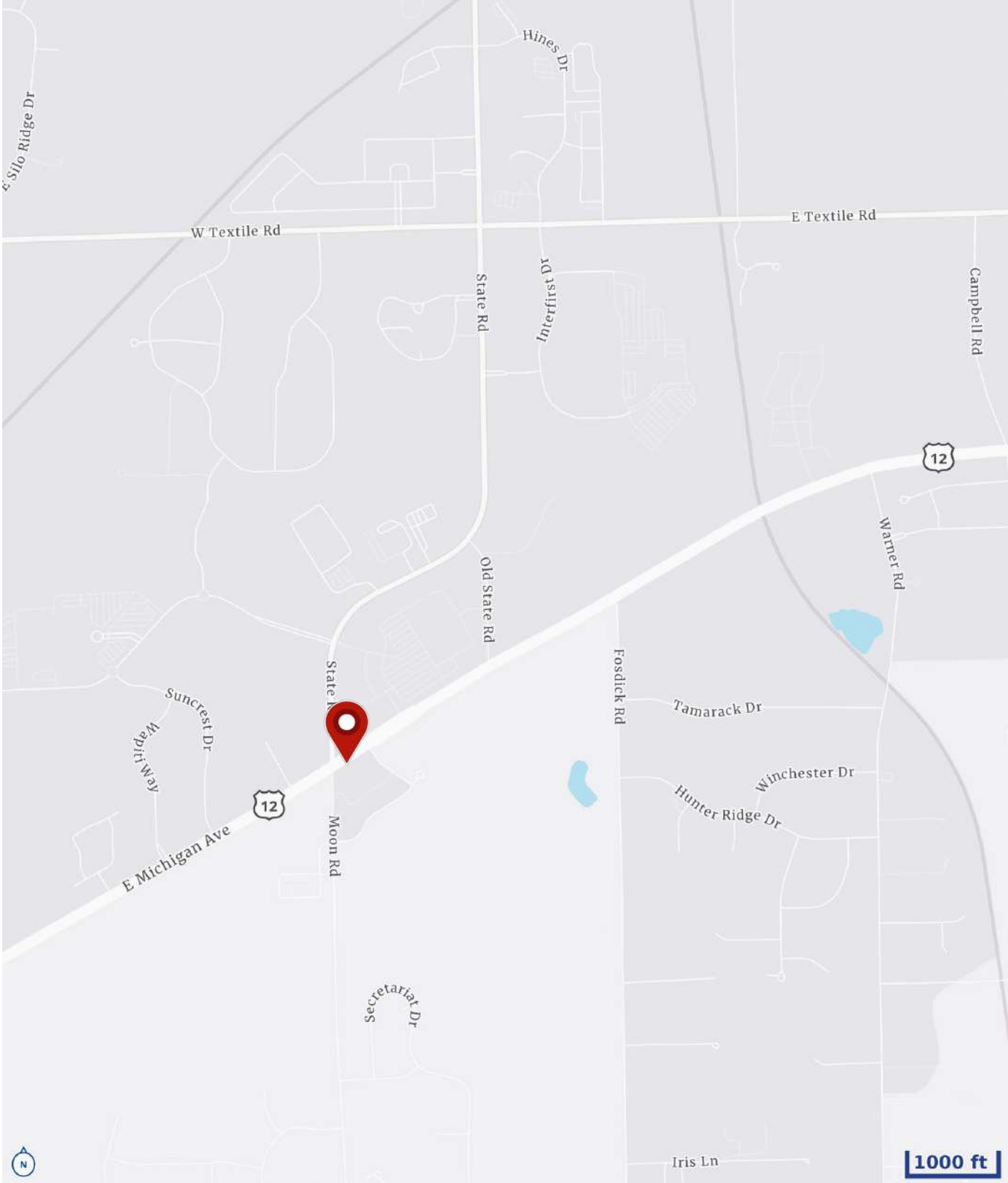
Site Plan



Demographics – 2 Mile Radius



Location



Aerial



We have no reason to doubt the accuracy of information contained herein, but we cannot guarantee it.
All information should be verified prior to purchase and/or lease.

CHACONAS GROUP
ANN ARBOR AREA

annarbor@colliers.com | 734 994 3100

Colliers Ann Arbor, 1955 Pauline Blvd., Suite 400, Ann Arbor, MI 48103
www.colliersannarbor.com

