



For Sale

Land Availability • Property Highlights

7075 E. Michigan Ave. | Saline, MI

- Priced At \$800,000
- Prime Corner Location w/ 26,300 Cars Passing by Daily
- 0.69-Acre Parcel With Frontage On Michigan Ave. and Moon Rd
- Potential For A 5,200 SF Building with Onsite Parking
- Convenient Access From Both Michigan Ave. and Moon Road
- Strategic Location next to Trinity Health IHA's Newly Opened Urgent Care Center, and nearby KinderCare Learning Center, Car Dealerships, Established Neighborhoods, Retail Centers, and Businesses
- All Necessary Utilities Readily Available
- Just Minutes From Downtown Saline, Nearby Ann Arbor, US-23, and Surrounding Communities

CHACONAS GROUP

ANN ARBOR AREA

annarbor@colliers.com | 734 994 3100

Colliers Ann Arbor, 1955 Pauline Blvd., Suite 400, Ann Arbor, MI 48103

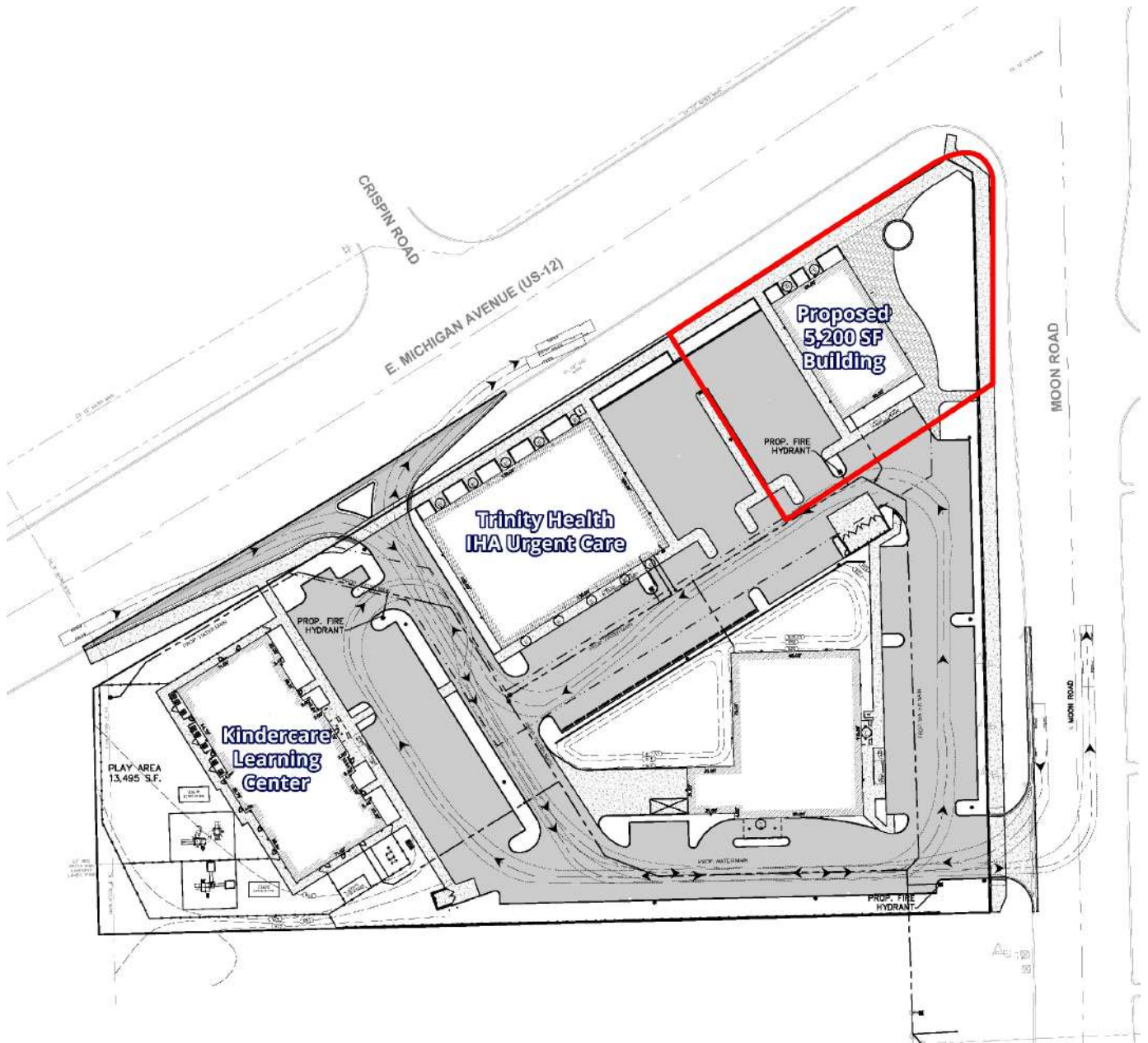
www.colliersannarbor.com



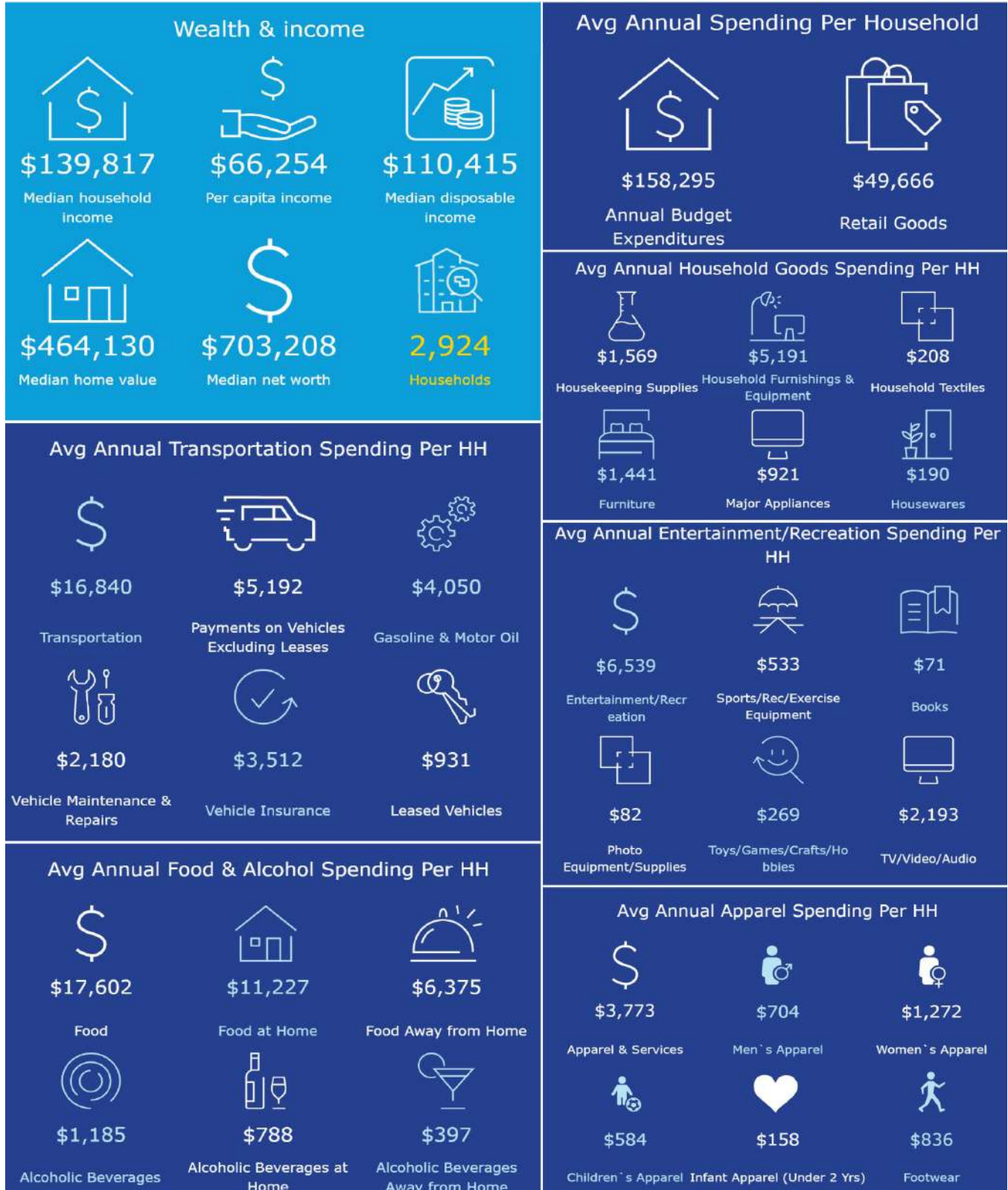
Property Photos



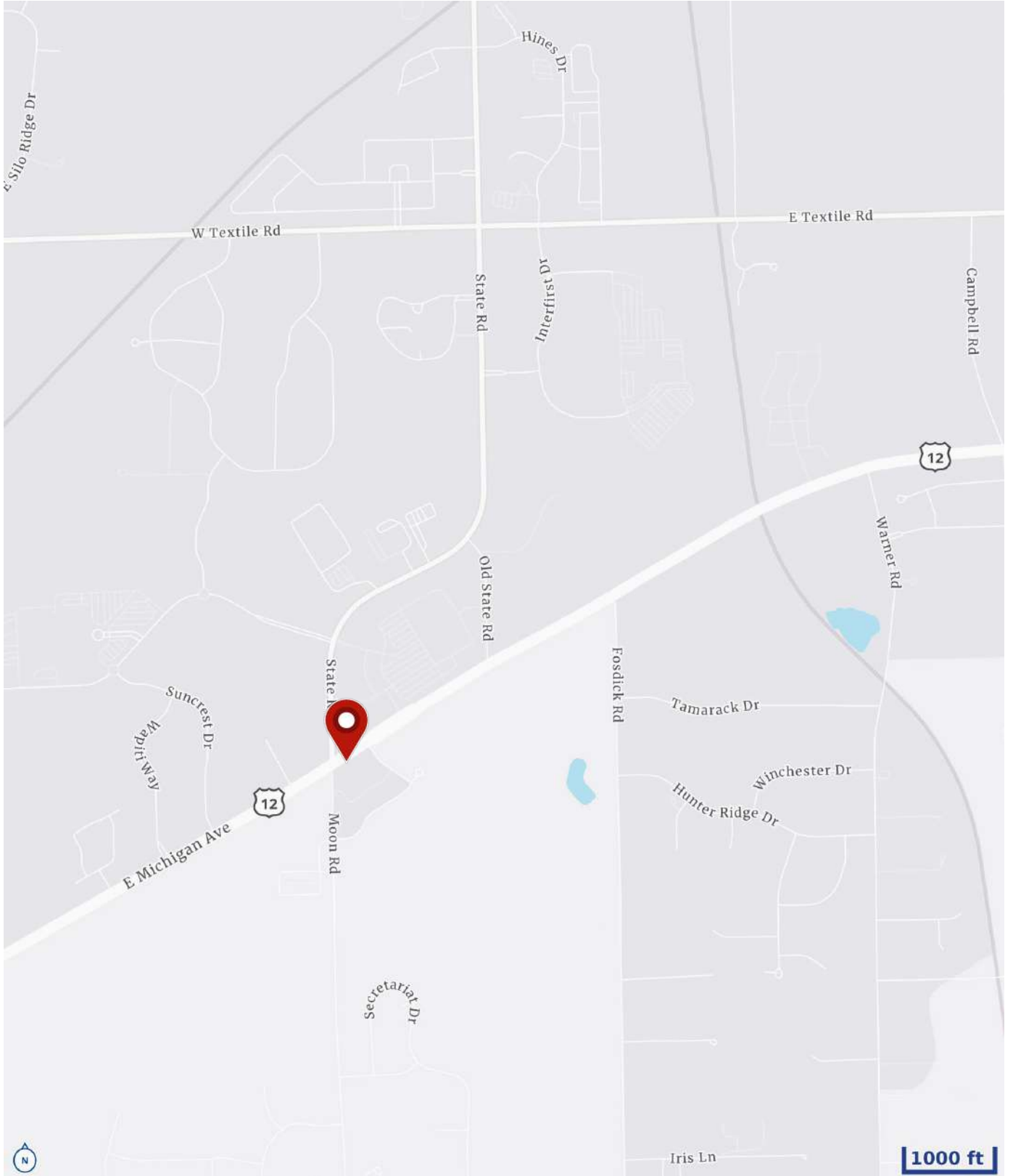
Site Plan



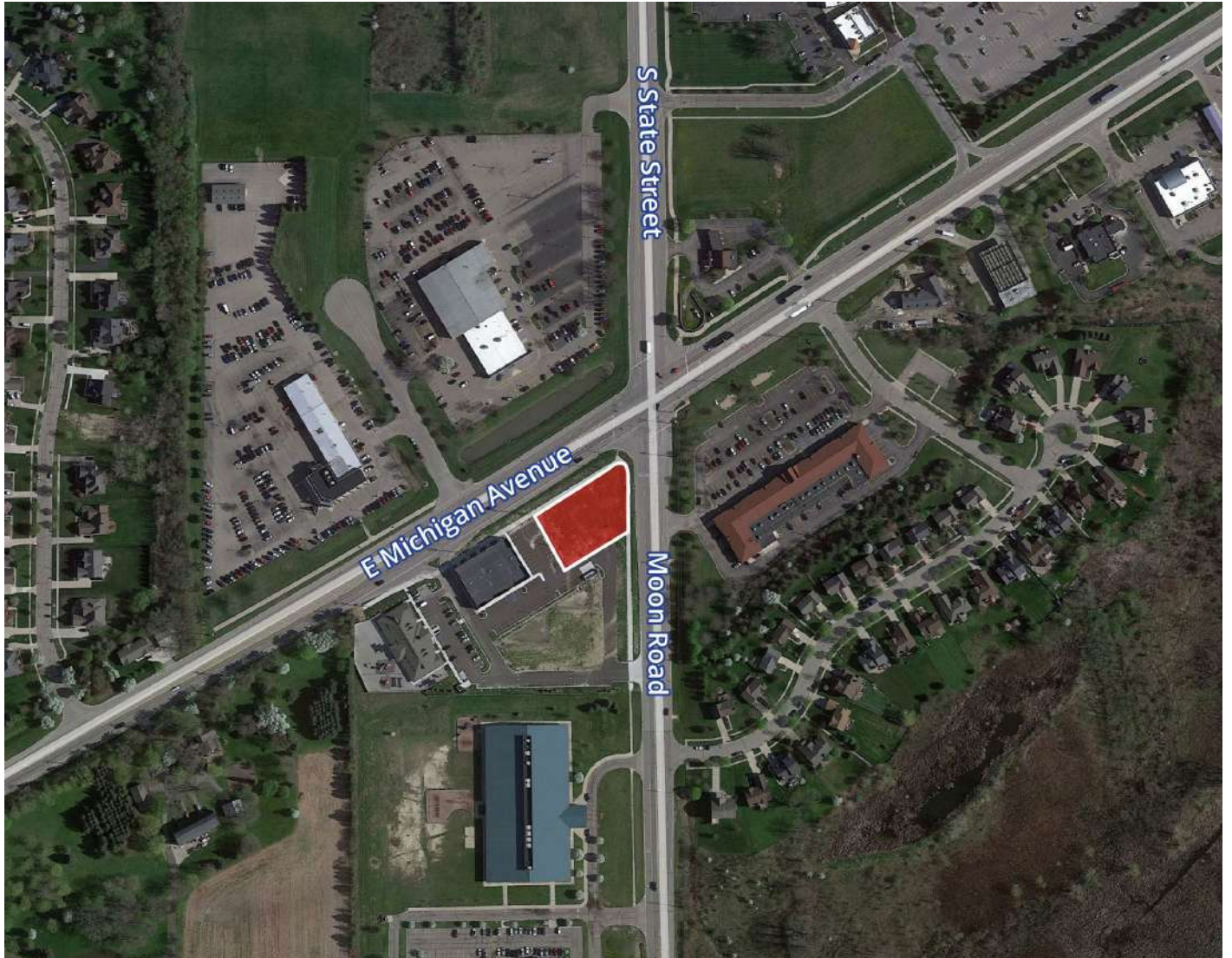
Demographics – 2 Mile Radius



Location



Aerial



We have no reason to doubt the accuracy of information contained herein, but we cannot guarantee it.
All information should be verified prior to purchase and/or lease.

CHACONAS GROUP
ANN ARBOR AREA

annarbor@colliers.com | 734 994 3100

Colliers Ann Arbor, 1955 Pauline Blvd., Suite 400, Ann Arbor, MI 48103
www.colliersannarbor.com

