



For Lease

Office Availability • Property Highlights

2750 Carpenter Rd. | Ann Arbor, MI

- Two Suites Available:
 - Suite 1 with +/- 1,857 SF \$2,400/month + Utilities
 - Suite 5 with +/- 923 SF \$1,500/month + Utilities
- Move-in Ready Condition
- Both Suites are Filled with Natural Light, and offer Open Workspaces, Private Offices, Kitchen Area, and Conference Rooms
- Common Restrooms Available on both Floors
- Great Professional Street Presence with Signage
- Serviced by an Elevator
- Close to Major Arteries: Washtenaw Ave, Packard Road, & Entrance/Exit Ramps to US-23
- Locally Owned Property with Great Upkeep, and Ample Parking

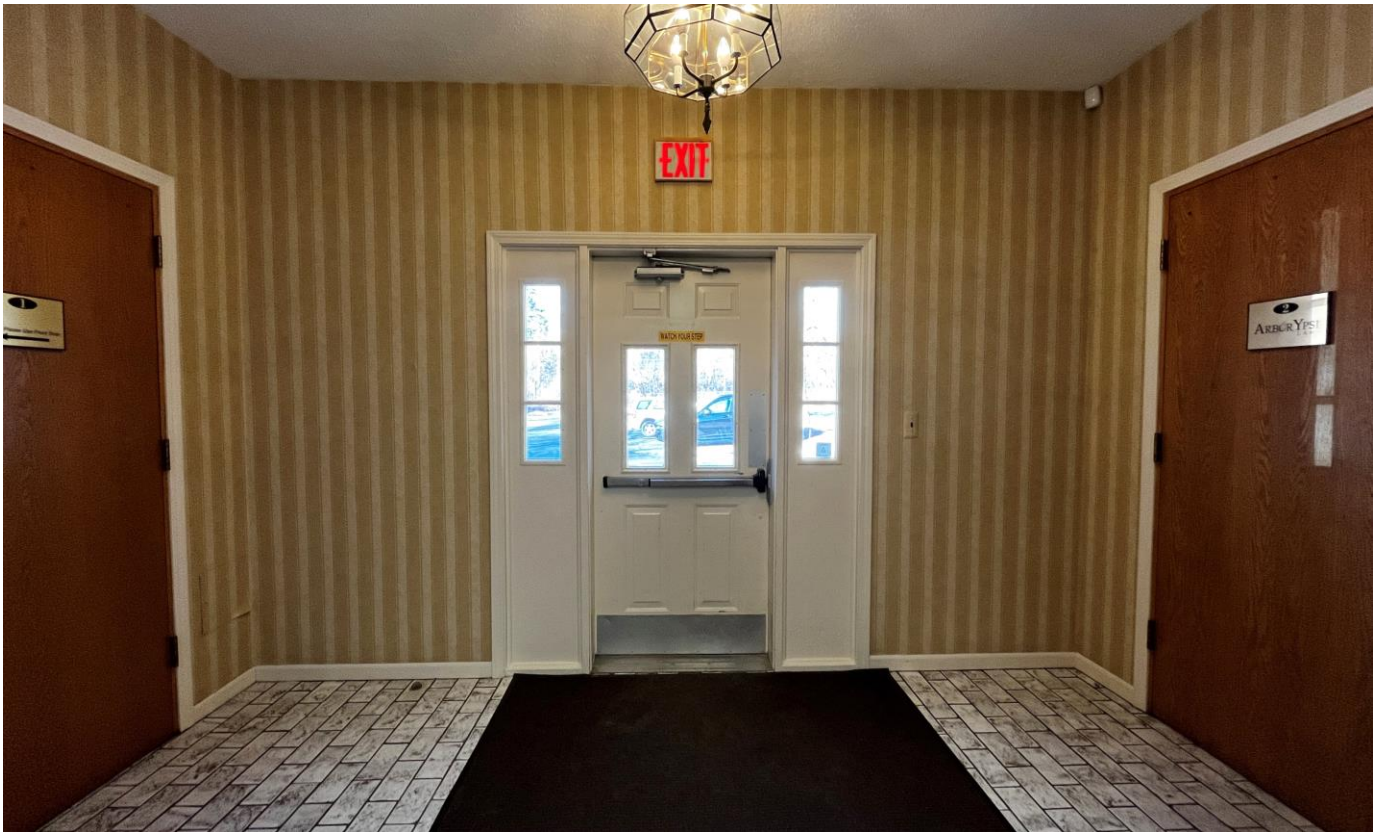
CHACONAS GROUP
ANN ARBOR AREA

734 769 5005 | annarbor@colliers.com

Colliers Ann Arbor, 1955 Pauline Blvd, Suite 400, Ann Arbor, MI 48103
www.colliersannarbor.com



Photos



Suite Details

Suite 1 has 1,857 SF, an open foyer, with door for privacy, five rooms for private office and/or conference room use, kitchenette and storage room, server room, and secondary exit.

Suite 5 has 923 SF, an open foyer, kitchenette with eating space, three private offices, and a conference room.



Suite #1 - Photos



Suite #1 - Photos



Suite #1 - Photos

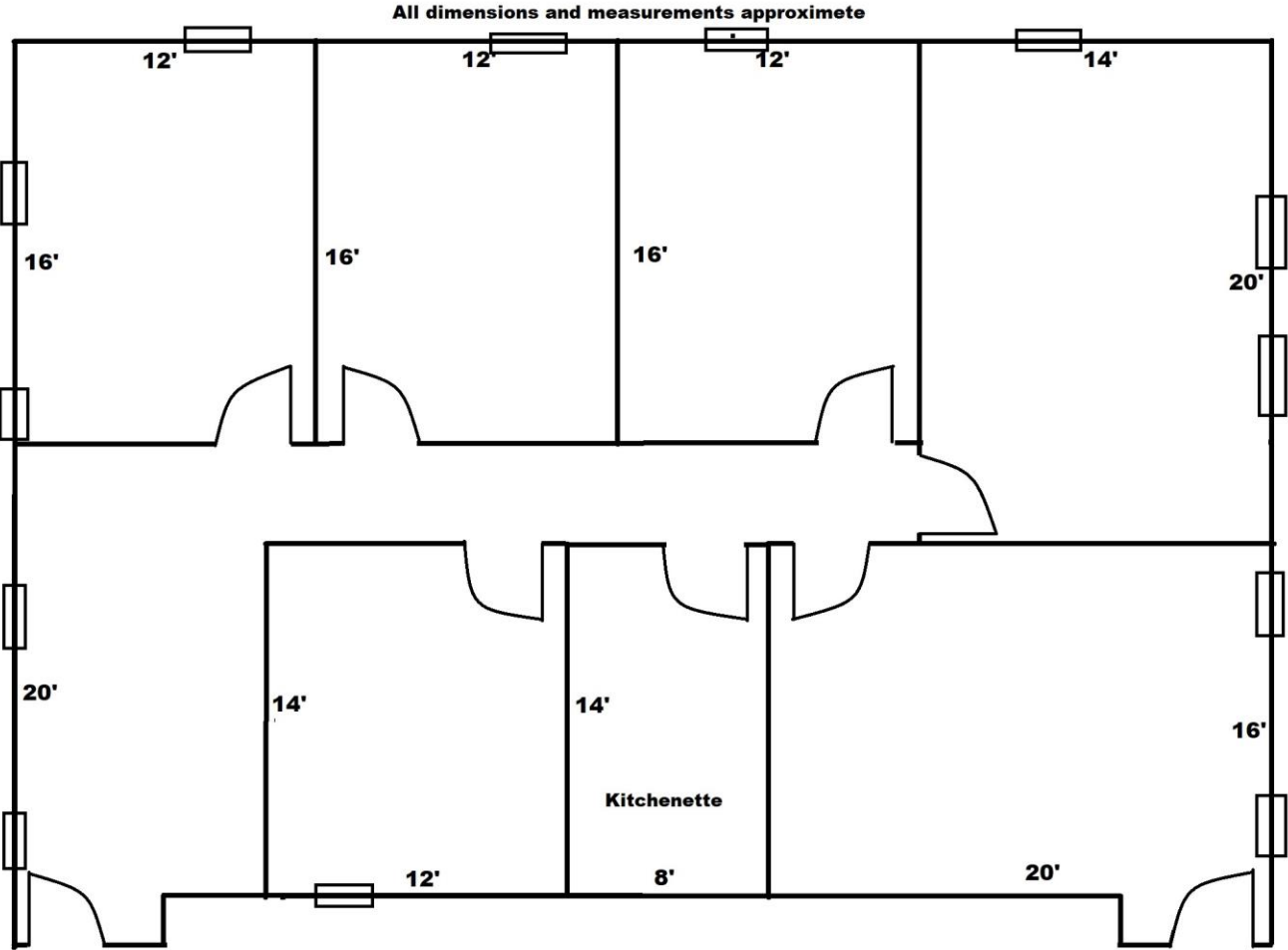


Suite #1 - Photos





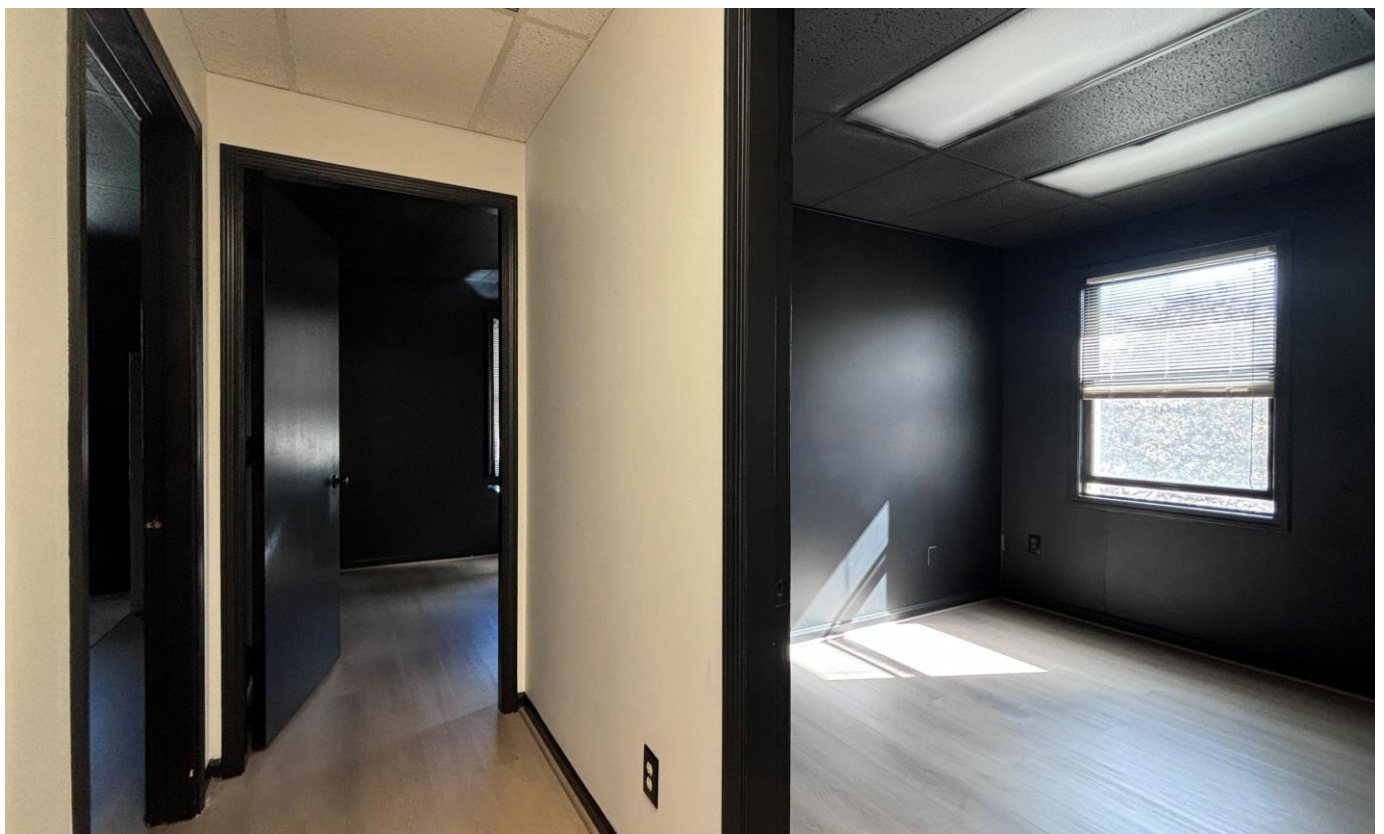
Suite #1 – Floor Plan



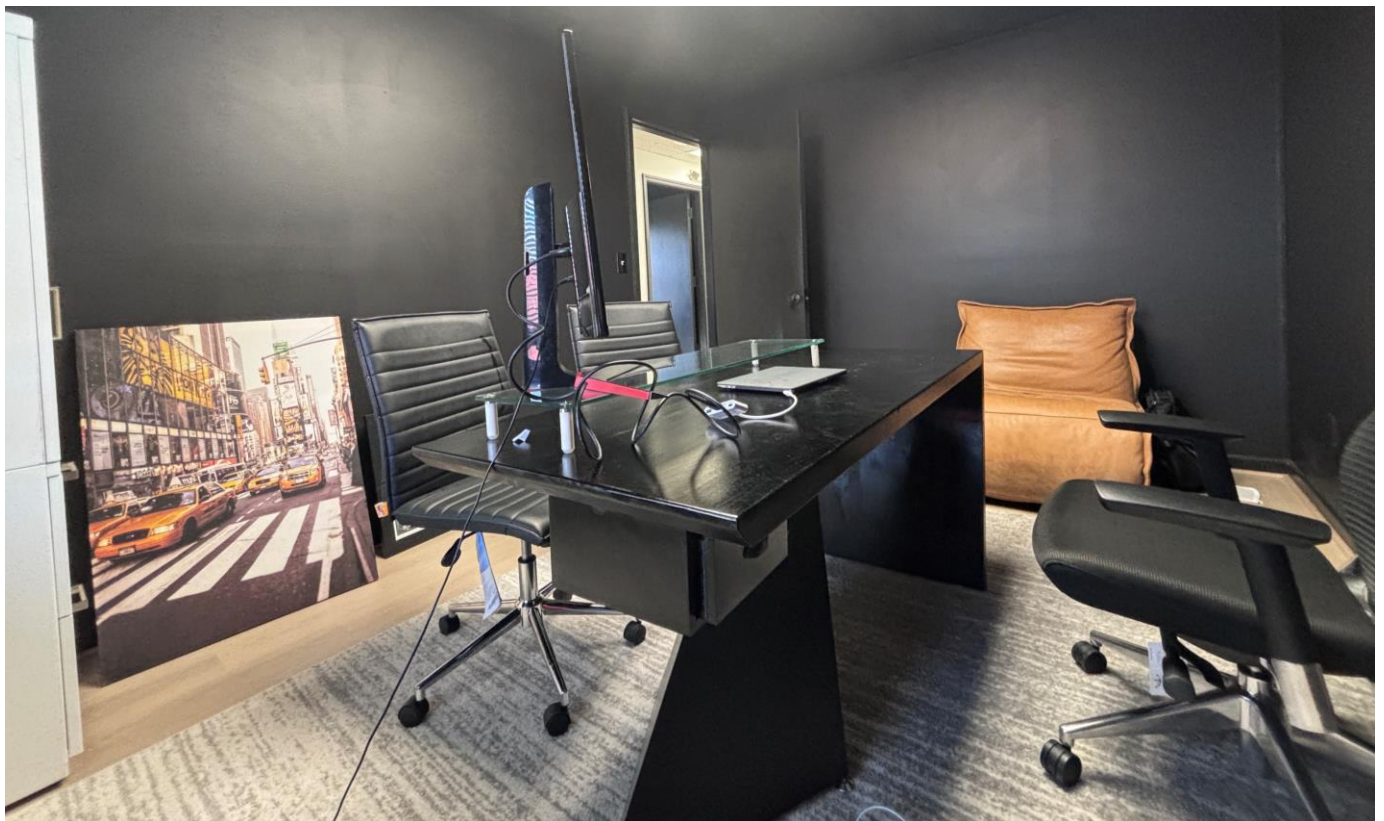
Suite #5 - Photos



Suite #5 - Photos

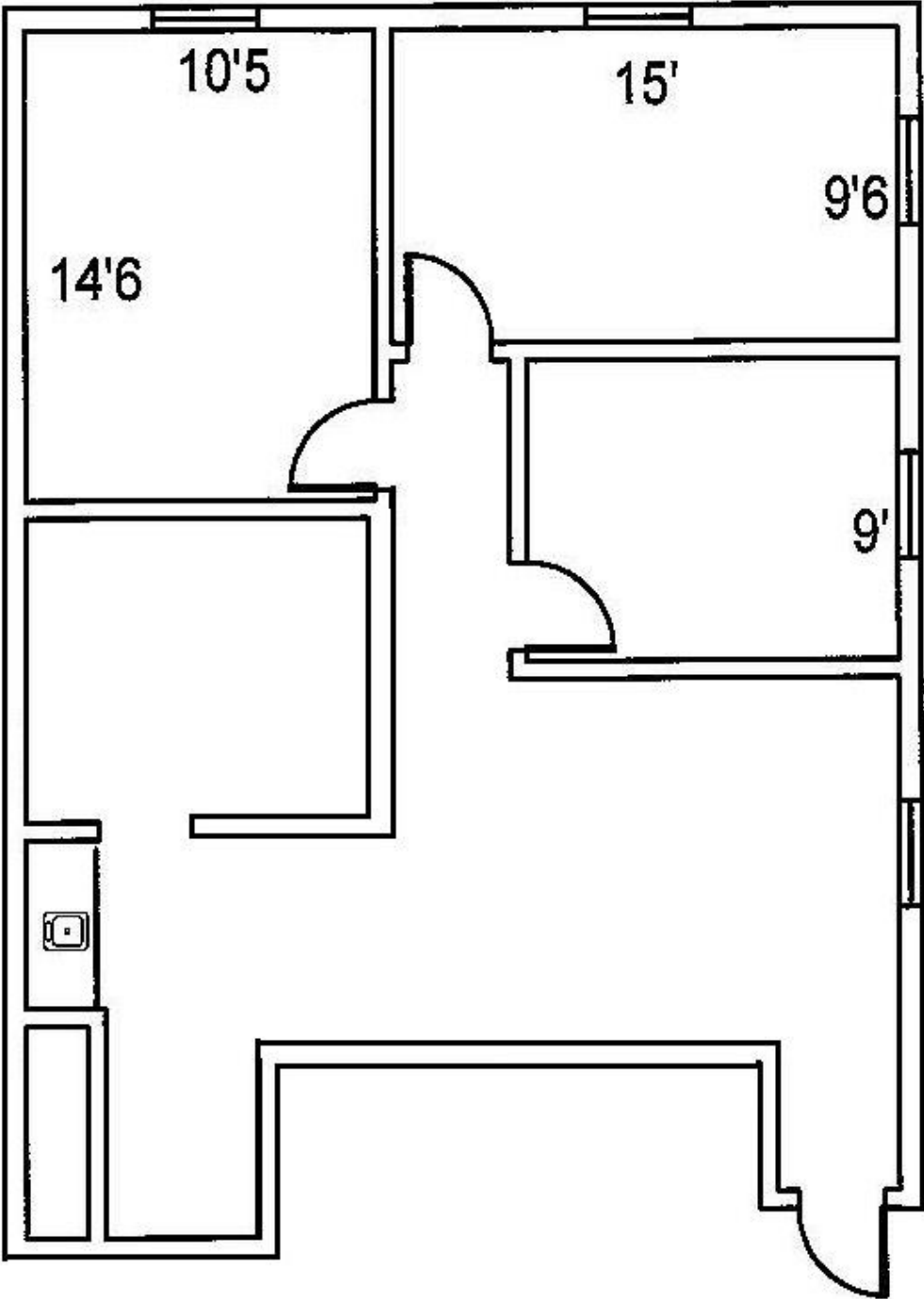


Suite #5 - Photos

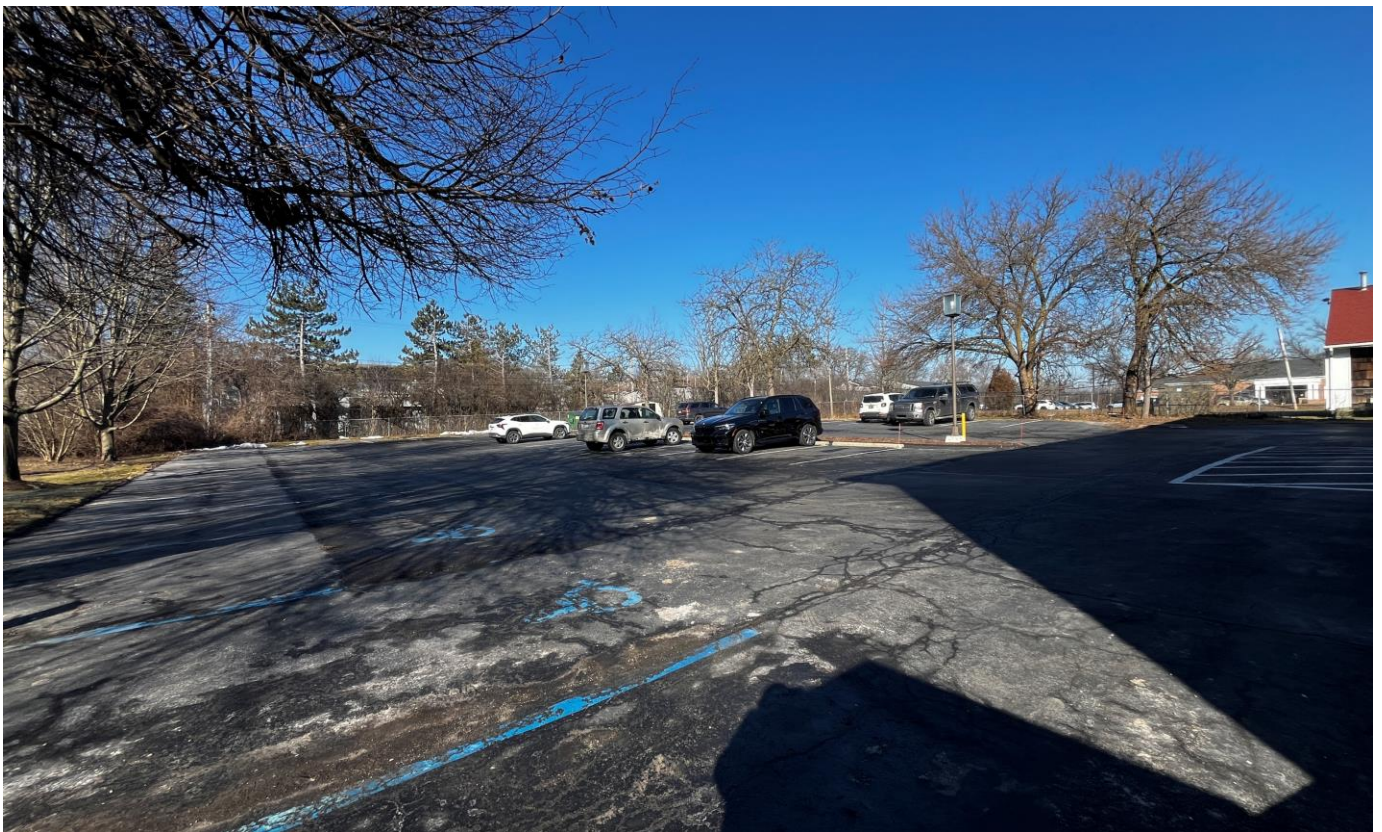


Suite #5 – Floor Plan

All measurements and dimensions approximate

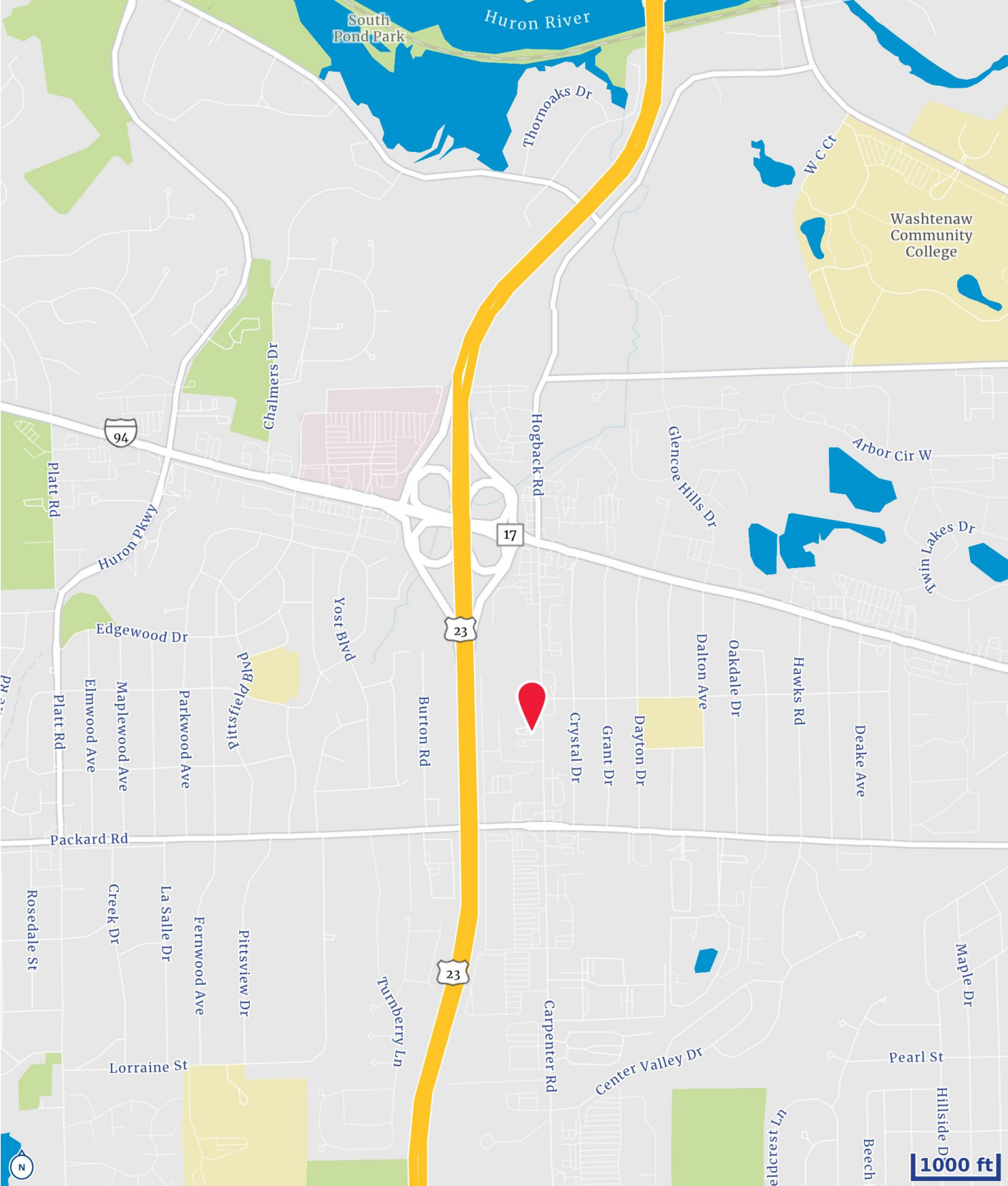


Photos

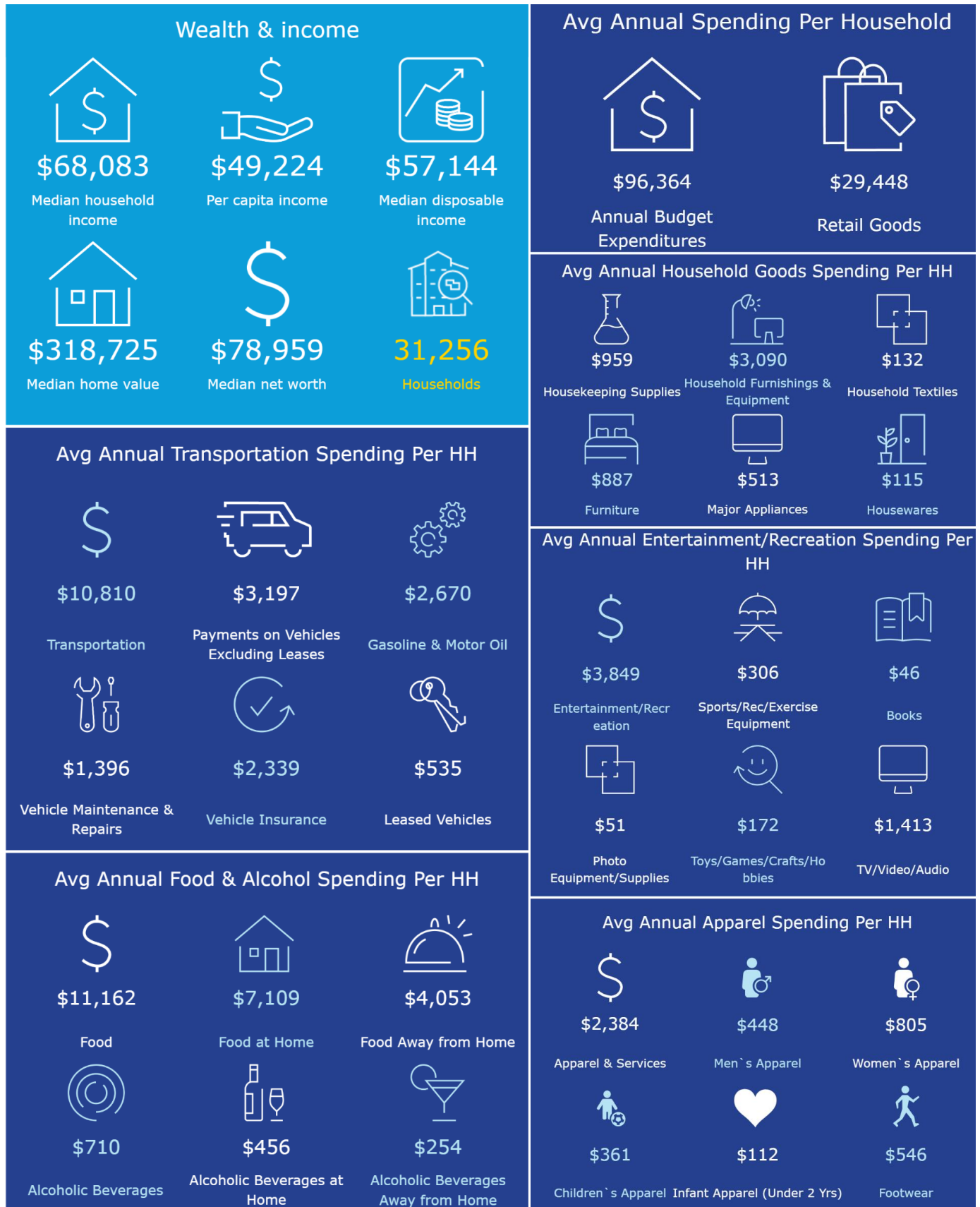




Location



Demographics – 3 Mile Radius



Bird's Eye Aerial



We have no reason to doubt the accuracy of information contained herein, but we cannot guarantee it. All information should be verified prior to purchase and/or lease.

CHACONAS GROUP ANN ARBOR AREA

734 769 5005 | annarbor@colliers.com

Colliers Ann Arbor, 1955 Pauline Blvd, Suite 400, Ann Arbor, MI 48103
www.colliersannarbor.com

