



For Lease

Office Availability • Property Highlights

225 S. Ashley St. | Ann Arbor

- 1,050 +/- SF
- \$1,900 Monthly
- 2-Story Office Space with Private Entrance and Roof Top Access
- Windows Facing Liberty St. and S Ashley St.
- Open Floor Plan with Large Windows Offering Plenty of Natural Lighting
- Great Downtown Ann Arbor Location
- Surrounded by Established Businesses, Retail and Restaurants, such as Old Town Tavern, Downtown Home & Garden, Fleetwood Diner, and Sweetwaters Coffee & Tea
- Walking Distance to Main St and University of Michigan's Central Campus. Close to M-14

CHACONAS GROUP ANN ARBOR AREA

734 769 5005 | annarbor@colliers.com

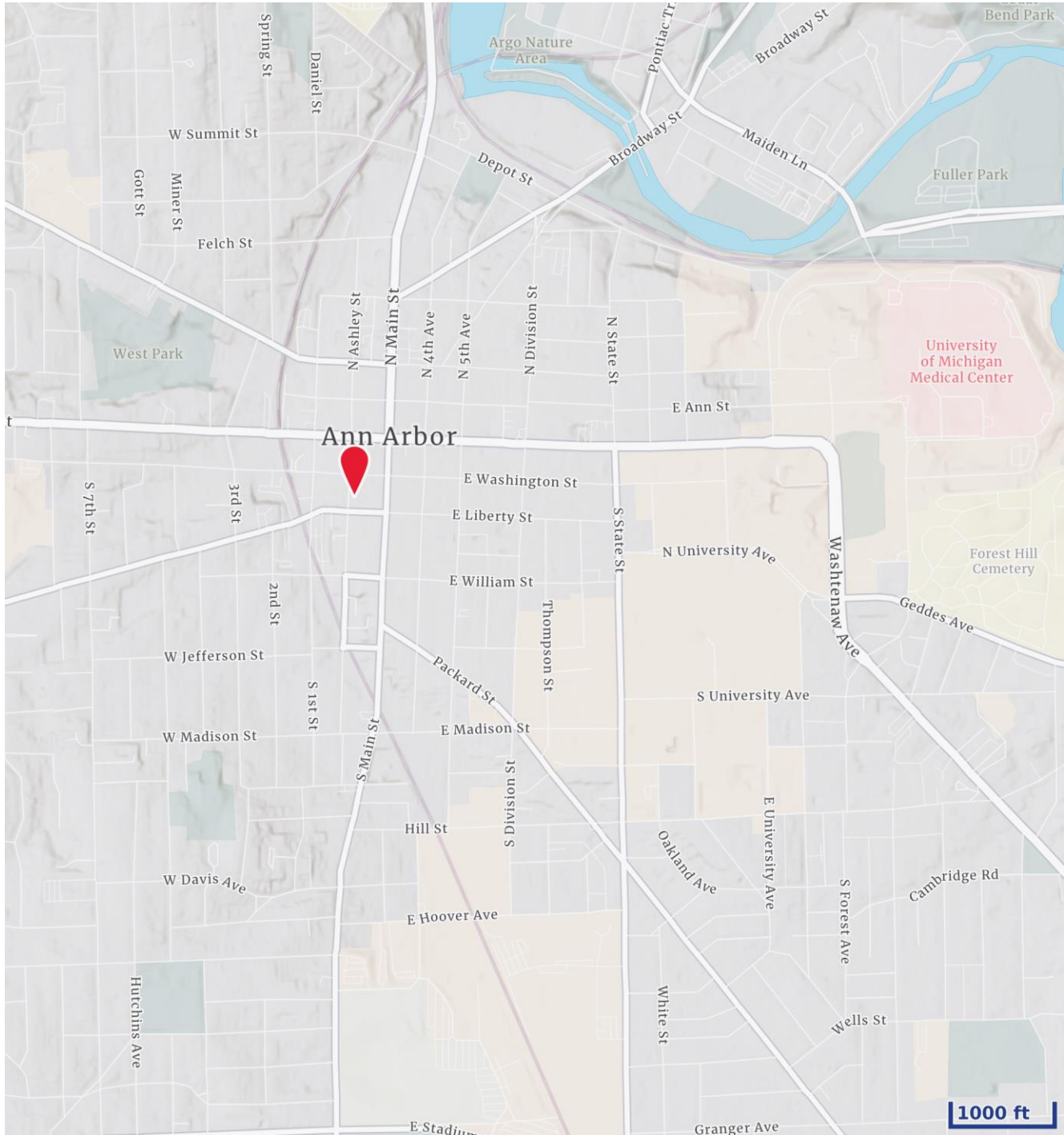
Colliers Ann Arbor, 1955 Pauline Blvd., Suite 400, Ann Arbor, MI 48103
www.colliersannarbor.com



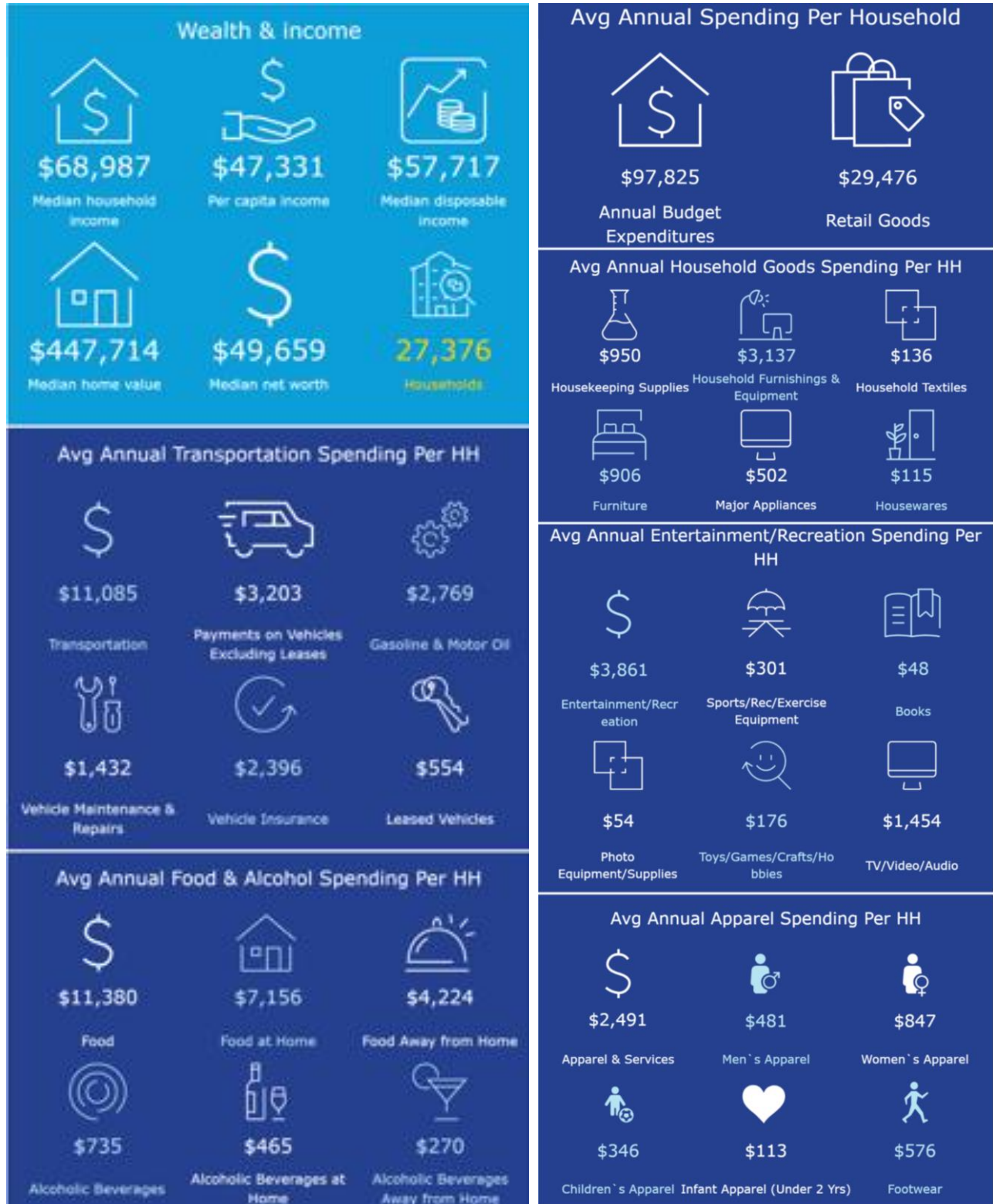
Property Photos



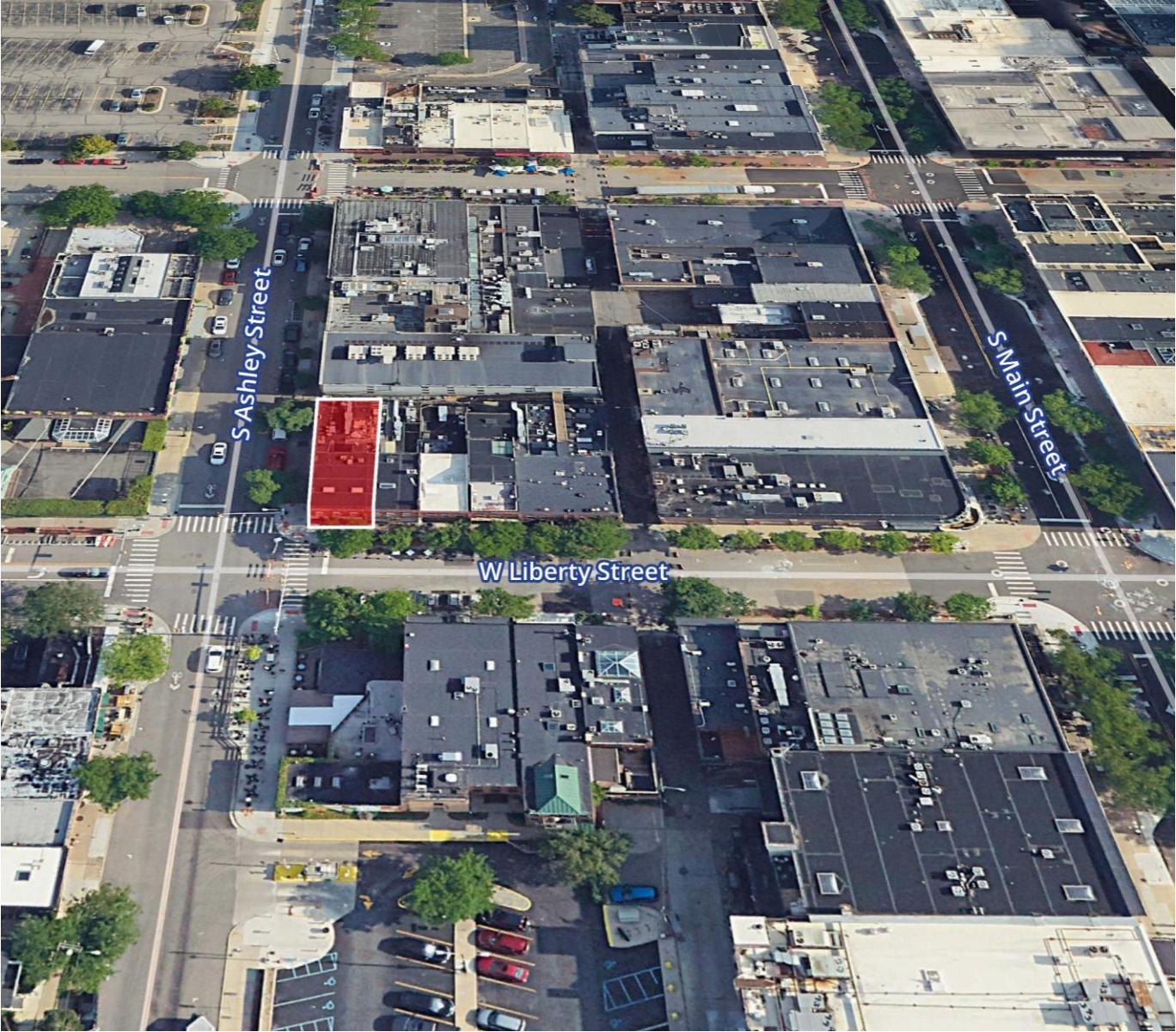
Location



Demographics – 2 Mile Radius



Aerial Map



We have no reason to doubt the accuracy of information contained herein, but we cannot guarantee it. All information should be verified prior to purchase and/or lease.

CHACONAS GROUP
ANN ARBOR AREA

annarbor@colliers.com | 734 994 3100

Colliers Ann Arbor, 1955 Pauline Blvd., Suite 400, Ann Arbor, MI 48103
www.colliersannarbor.com

