



# For Lease

Office or Retail Availability • Property Highlights

**215-217 E. Washington St. | Ann Arbor, MI**

- Main Level: 1,840 – 5,086 SF
  - \$35 PSF NNN
- 2<sup>nd</sup> Floor & Loft: 5,026 SF
  - \$28 PSF MG
- Great Downtown Ann Arbor Location, Nearby Public Parking, Established Retail, Restaurants, & Businesses
- Blocks to U of M Campus
- Main Level Offers Storefront Windows,
- Plenty of Natural Light. Great for Restaurants (plenty of power), Retail, Office, or Medical use
- Terrific 2<sup>nd</sup> Floor Office Space offers Soaring Ceilings, Loft with Private Offices, Reception, Kitchen Area, Private Offices, Conference Room, and Open Workspaces
- Easy Access to M-14, I-94, and W Stadium Blvd
- Elevator

## CHACONAS & PARTNERS

ANN ARBOR AREA

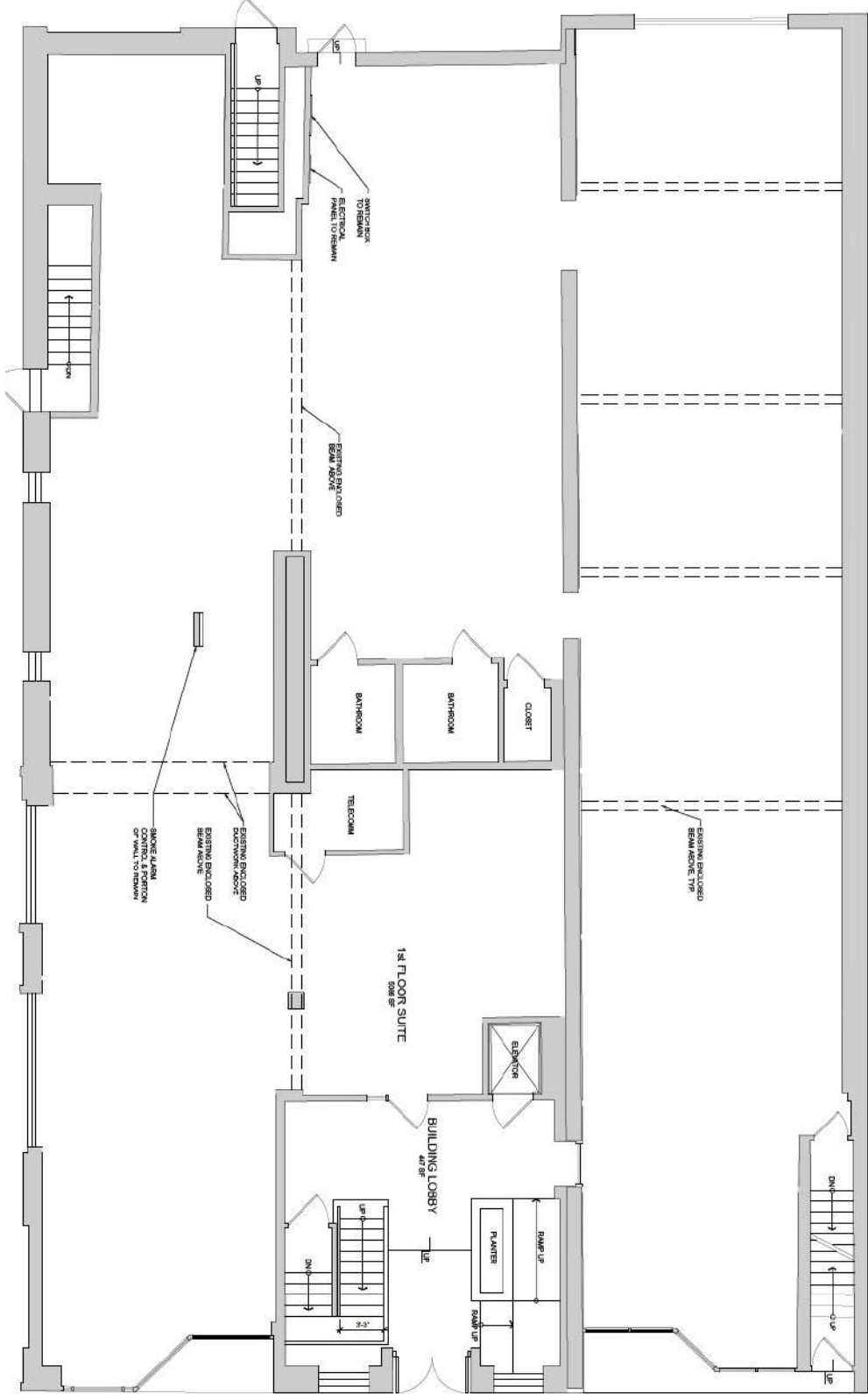
734 769 5005 | [annarbor@colliers.com](mailto:annarbor@colliers.com)

Colliers Ann Arbor, 1955 Pauline Blvd, Suite 400, Ann Arbor, MI 48103  
[www.colliersannarbor.com](http://www.colliersannarbor.com)





Floor Plan – Main Level



Property Photos – First Floor





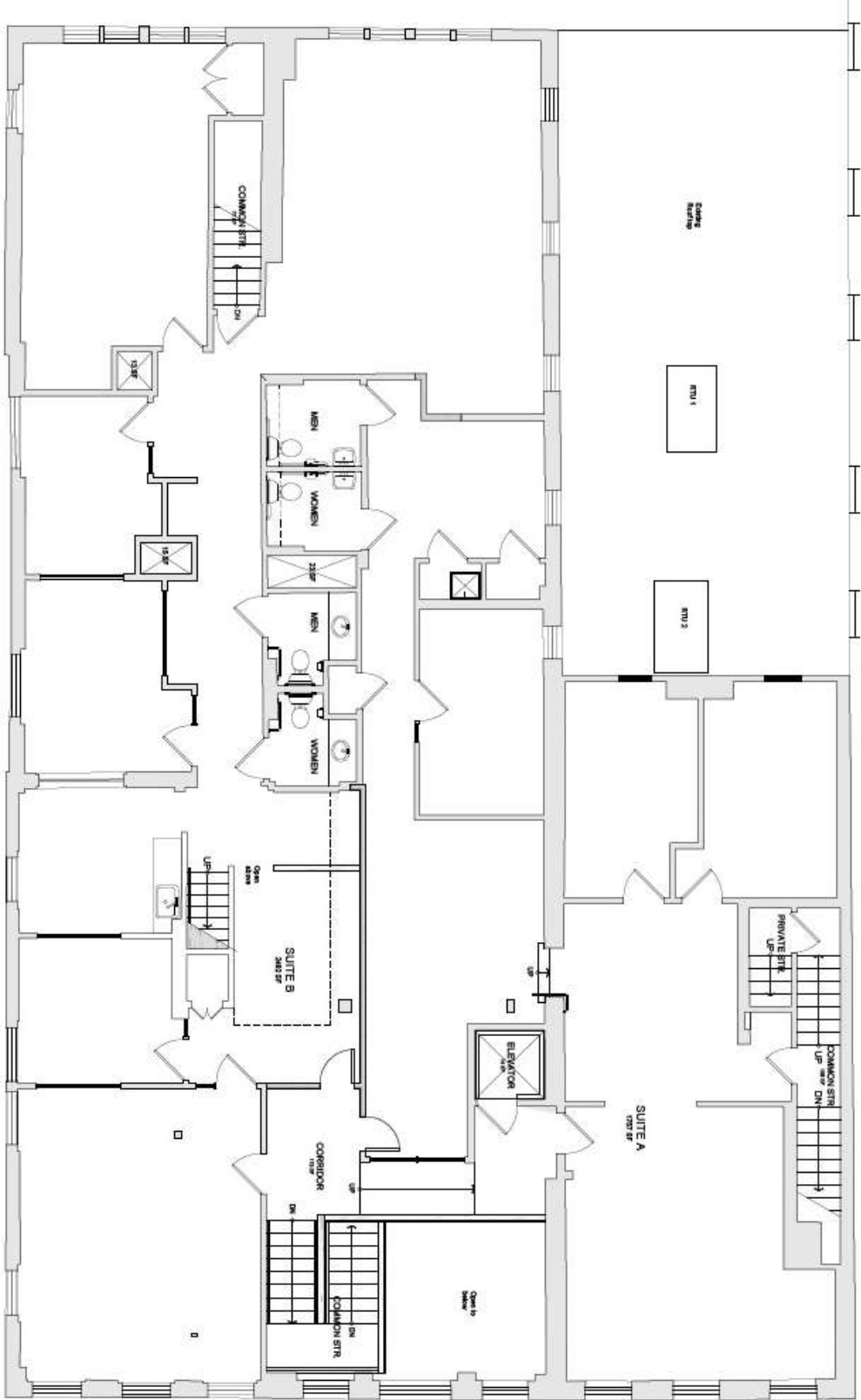


Property Photos – First Floor





Floor Plan – 2<sup>nd</sup> Floor





Property Photos – 2<sup>nd</sup> Floor





Property Photos – 2<sup>nd</sup> Floor

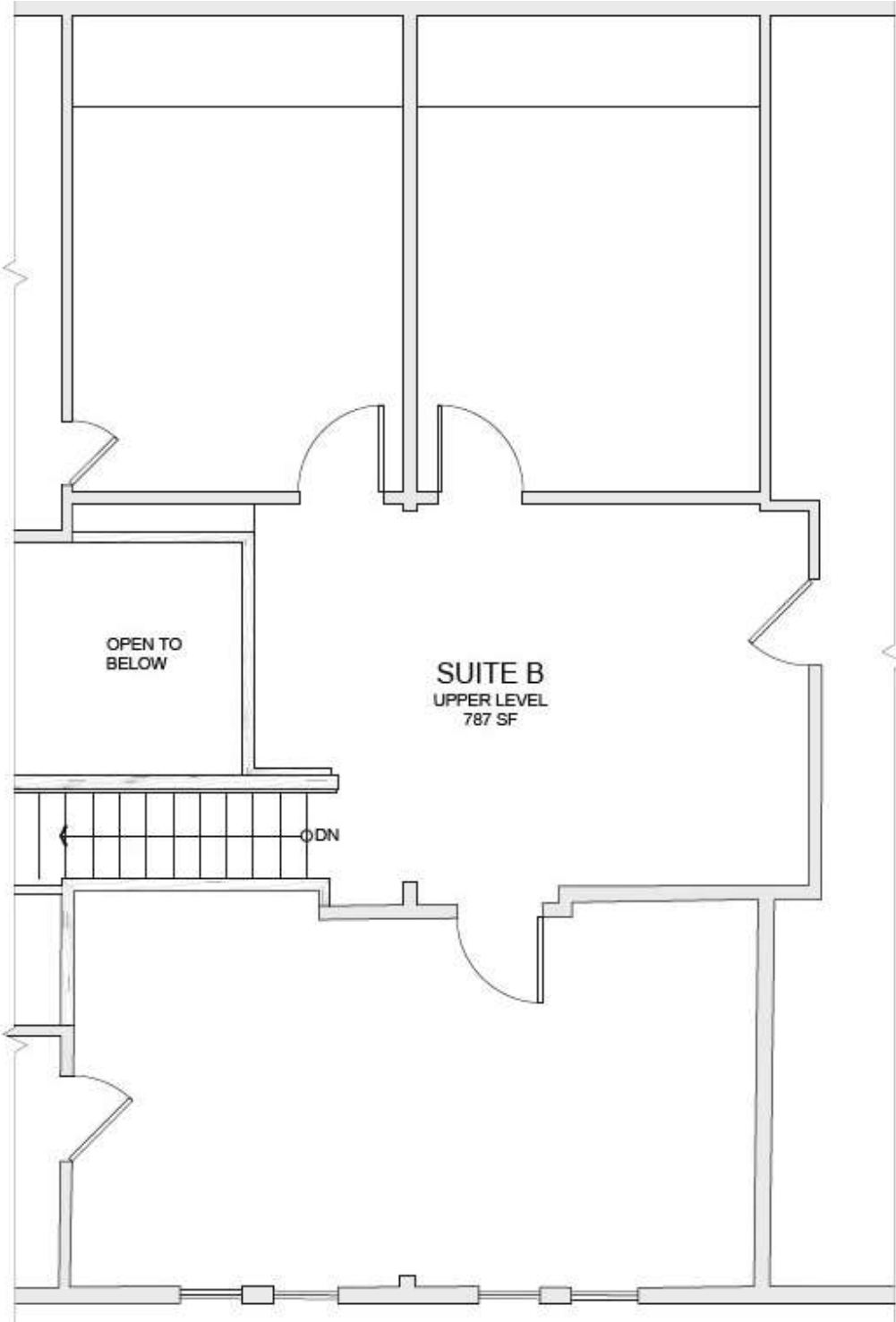


Property Photos – 2<sup>nd</sup> Floor





Floor Plan – Loft



Property Photos – Loft

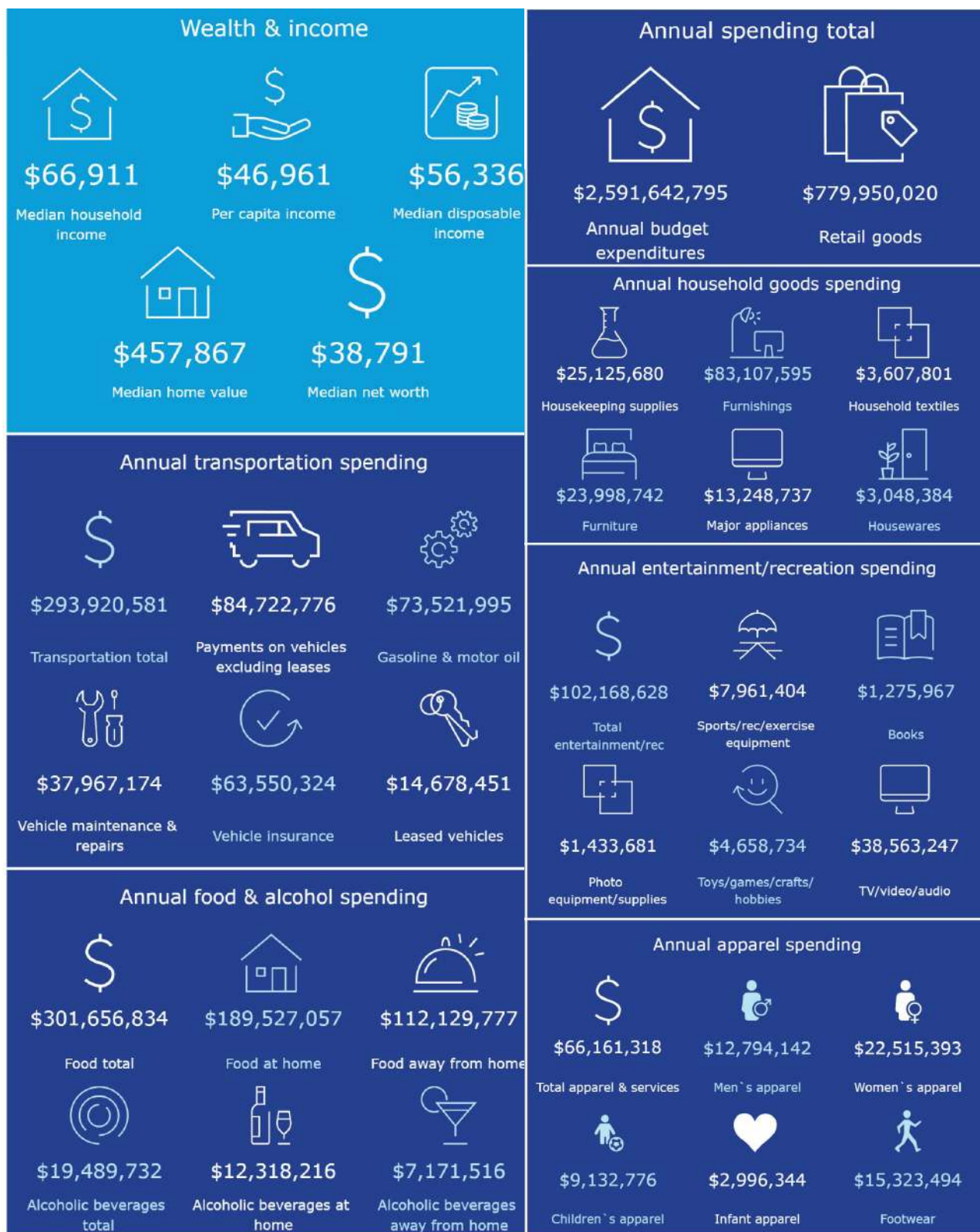




Property Photos – Loft

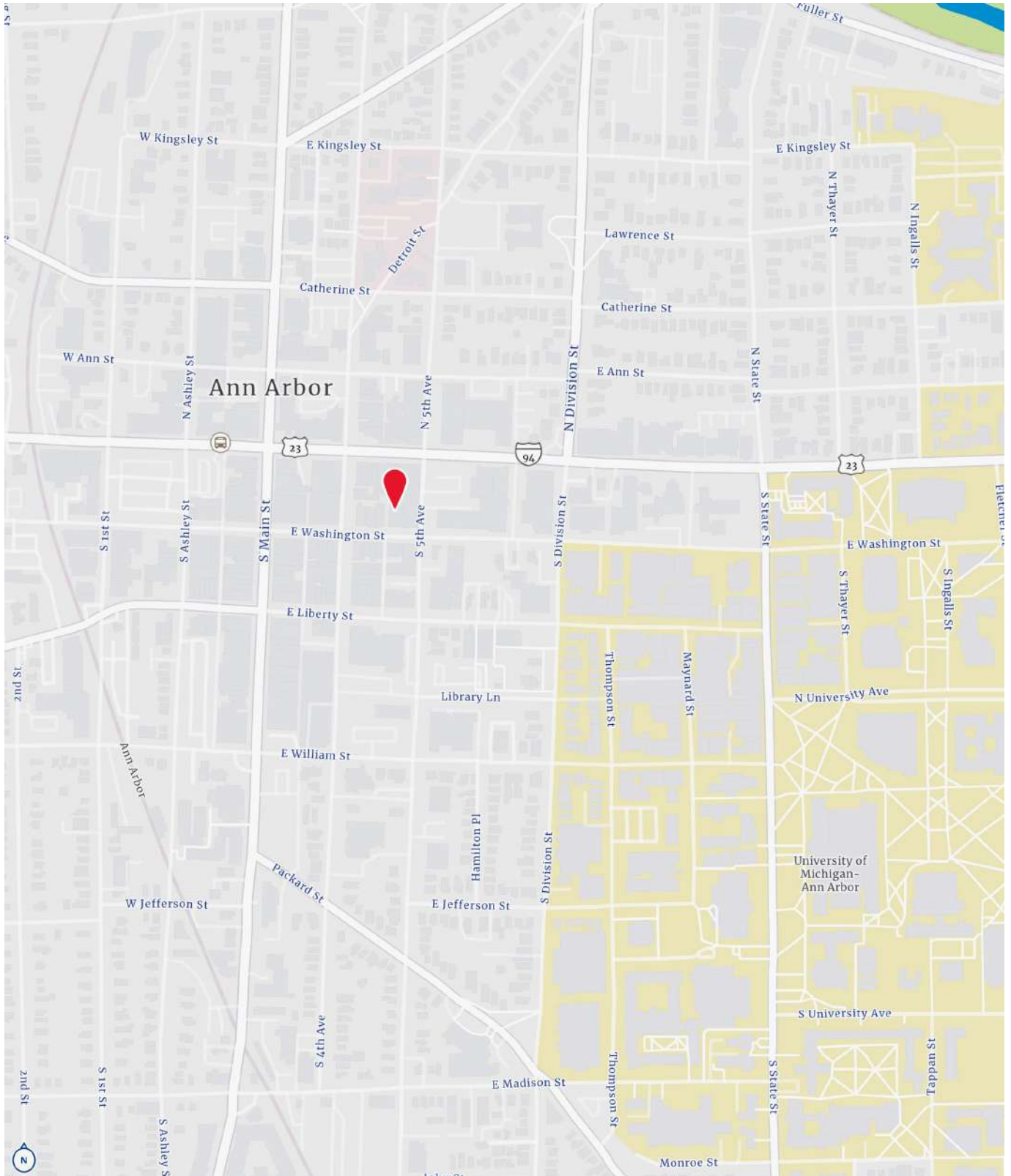


## Demographics – 2 Mile Radius

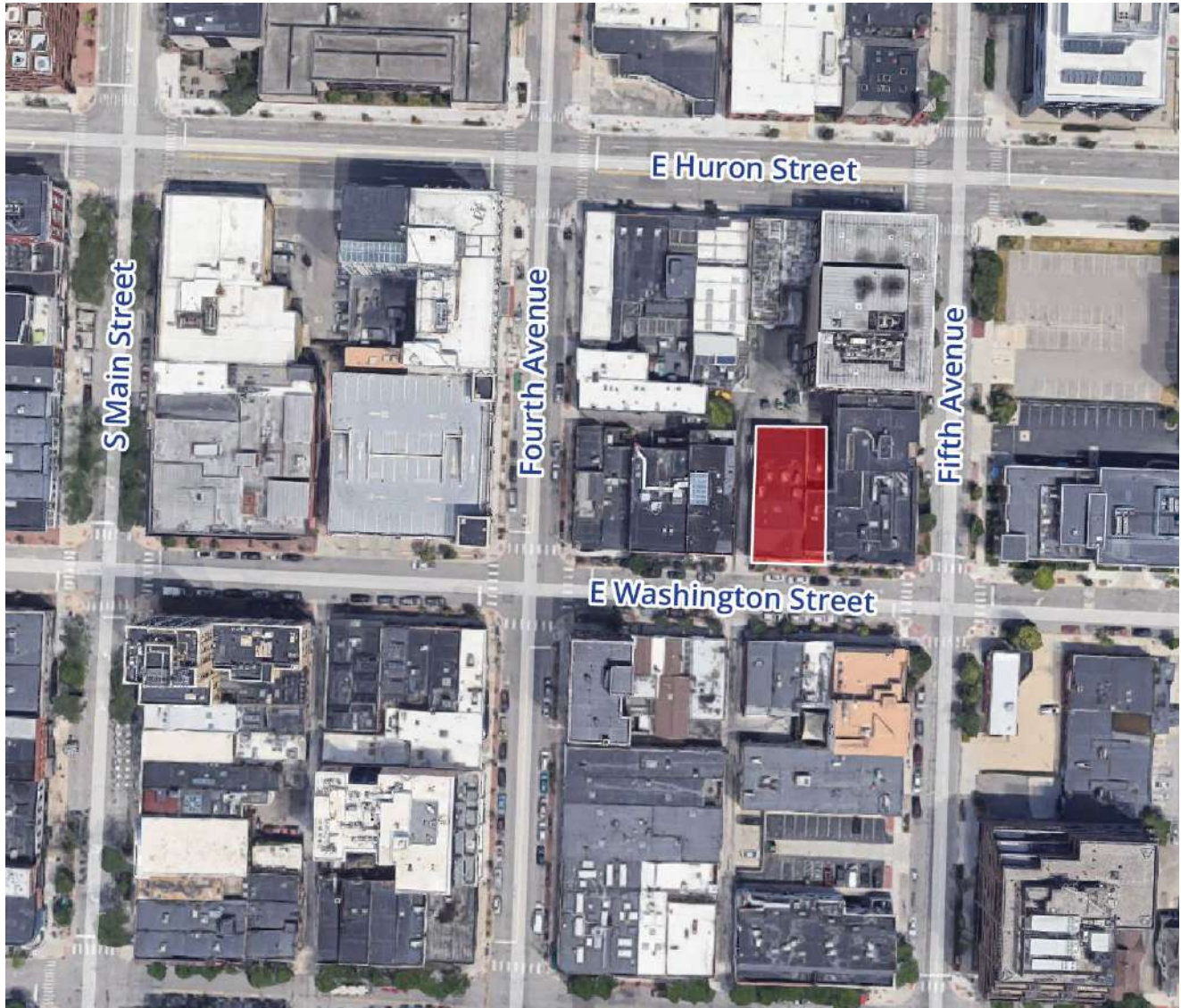




## Location



## Aerial



We have no reason to doubt the accuracy of information contained herein, but we cannot guarantee it. All information should be verified prior to purchase and/or lease.

## **CHACONAS & PARTNERS**

ANN ARBOR AREA

734 769 5005 | [annarbor@colliers.com](mailto:annarbor@colliers.com)

Colliers Ann Arbor, 1955 Pauline Blvd, Suite 400, Ann Arbor, MI 48103  
[www.colliersannarbor.com](http://www.colliersannarbor.com)

