



FOR LEASE

Office Availability • Property Highlights

2100 S Main St. | Ann Arbor, MI

- Space Available at **\$26.50 PSF**
 - Suite B: 1,765 SF
 - Suite C: 2,200 SF
 - Suite D/E: 3,245 SF
 - Combined Suite: 7,000 SF
- Great Location w/ Street Visibility at the Corner of S Main St and Ann Arbor-Saline Rd
- Walking Distance to Busch's Grocery Store, Whole Foods, and UM Stadium
- Well-maintained, Local Owner-Manager
- Recently Refurbished and Secured with Alarm System, Pass Card System, and Interior Cameras
- Parking Lot Holds up to 50 Vehicles
- Street Parking Also Available on Rear Drive

CHACONAS GROUP

ANN ARBOR AREA

annarbor@colliers.com

Colliers International Ann Arbor, 1955 Pauline Blvd, Suite 400 | Ann Arbor, MI 48103
www.ColliersAnnArbor.com



Property Photos – Suite B



Property Photos – Suite C

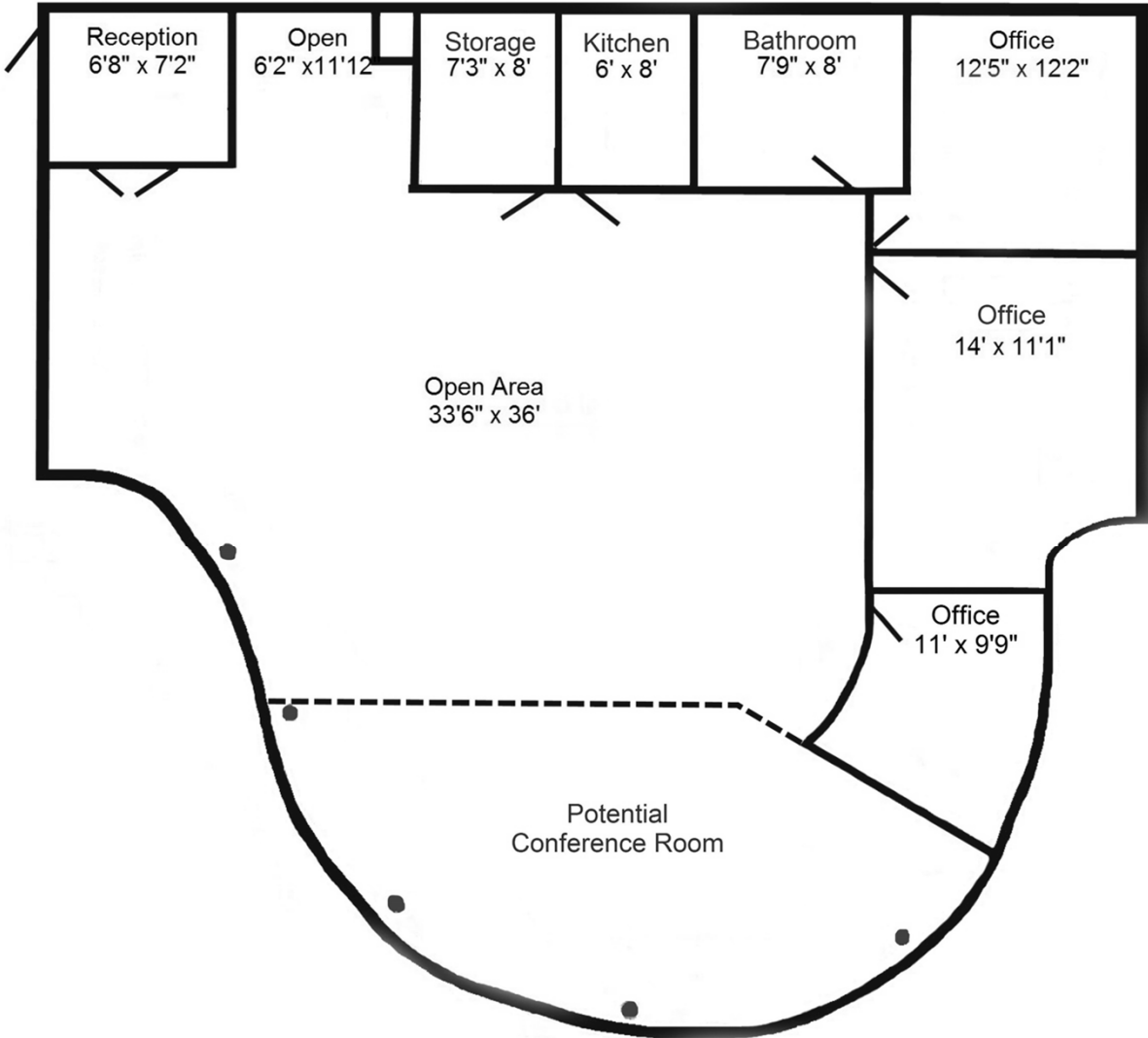


Property Photos -Suite C

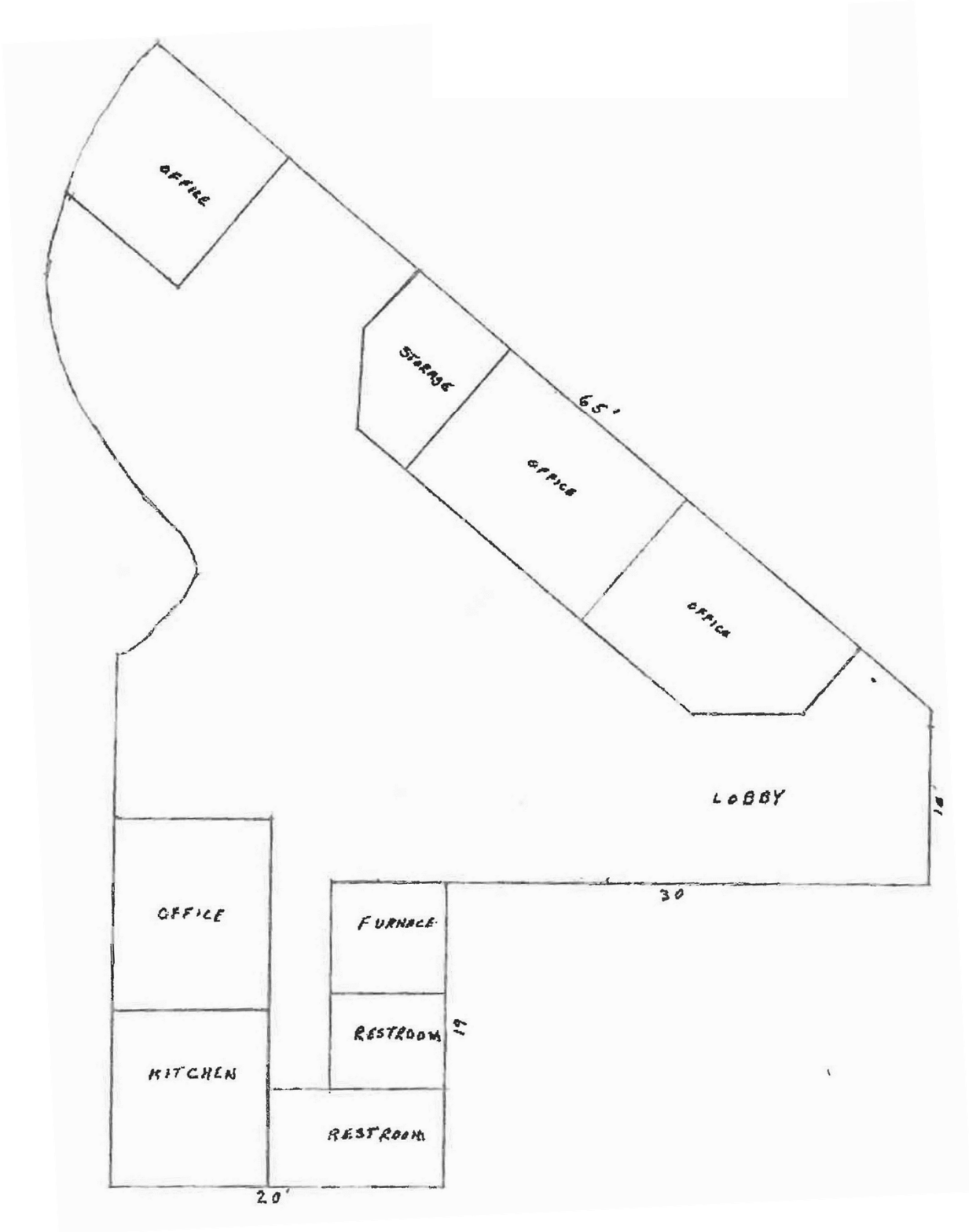




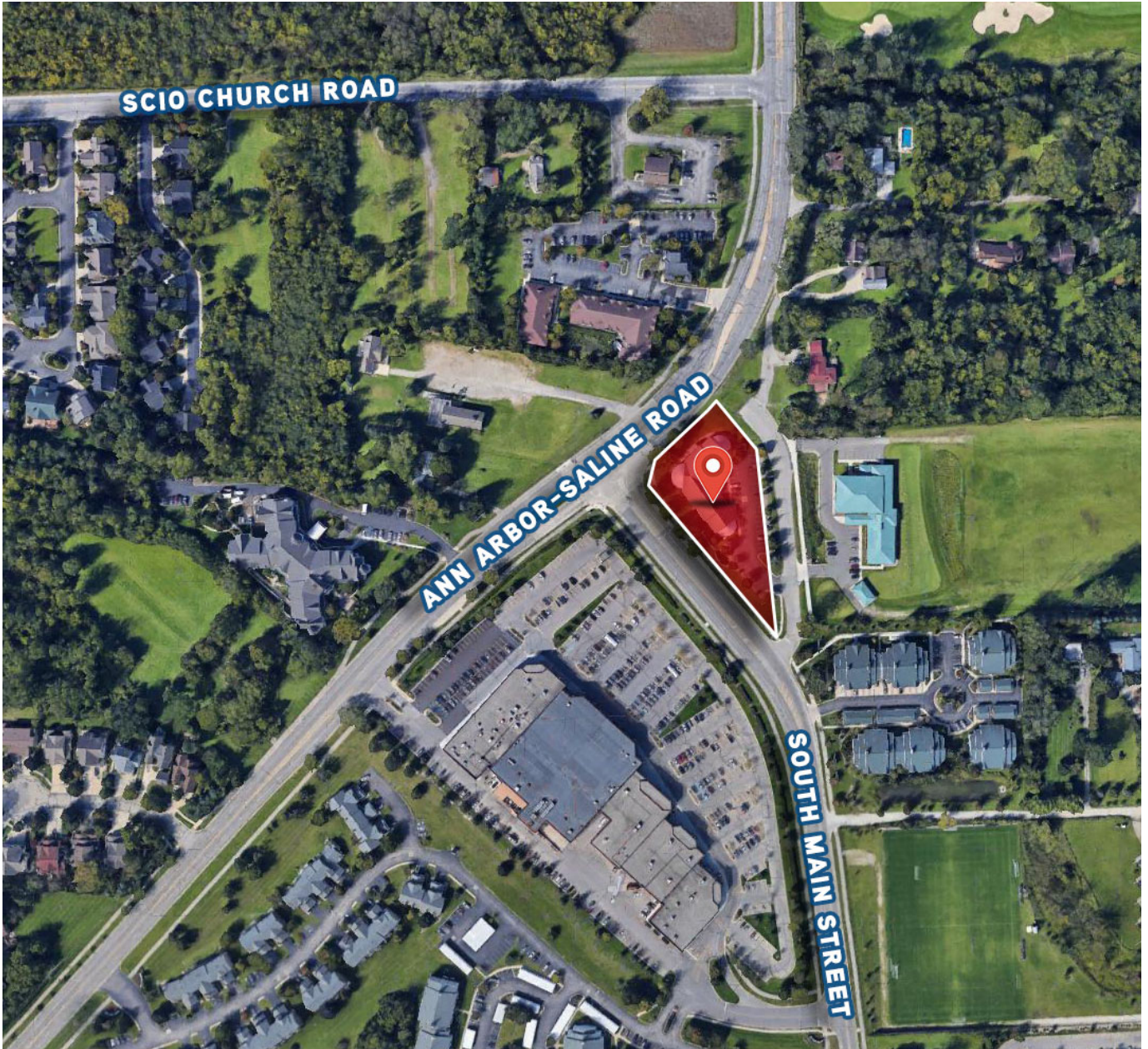
Suite B – Floor Plan



Suite C – Floor Plan



Aerial



We have no reason to doubt the accuracy of information contained herein, but we cannot guarantee it. All information should be verified prior to purchase and/or lease.

CHACONAS GROUP

ANN ARBOR AREA

annarbor@colliers.com

Colliers International Ann Arbor, 1955 Pauline Blvd, Suite 400 | Ann Arbor, MI 48103
www.ColliersAnnArbor.com